



MYANMAR RIVER JOURNEYS

HANDBOOK OF SAILINGS & GENERAL INFORMATION

JULY 2012 - APRIL 2013

(4TH EDITION NOV 2011)

Cruises operated with the Vessels

Rv  *PAUKAN*
2 0 1 2
A Small Cruising Boutique Hotel

Rv  *PAUKAN*
2 0 0 7
A Charming Cruising Boutique Hotel

Rv  *PAUKAN*
1 9 4 7
An Original 1947 Built Colonial Steamer

25, GROUND FLOOR, 38TH STREET, KYAUKTADA TOWNSHIP, YANGON, MYANMAR

www.ayravatacruises.com * www.paukan.com

INFO@AYRAVATACRUISES.COM

COMPANY PROFILE

COMPANY NAME

We have chosen the name Ayravata because the Burmese name of Irrawaddy (also spelt Ayeyarwaddy from the Pali Eravati) is derived from the name in Sanskrit of the elephant mount of Indra, Airavati (or Ayravata). This Divine Elephant is thought of as the progenitor of all earthly elephants and is understood as the embodiment of the huge clouds pregnant with the monsoon rains. Elephants were in Indian mythology often a symbol for water

FLEET NAME

Rv Paukan comes after "Paukan Rarma", the city founded in the 846 AD by King Pyin Oo Lwin to replace the former capital called Thanpawaddy. Paukan Rarma then became Bagan, the capital of the First Burmese Empire founded by King Anawrahta in the 11th Century.

THE STORY

Ayravata Cruises was founded in the 2003 by three Myanmar entrepreneurs with the support and management of a European expert in cruises on Asian rivers. Thanks to the vast experience of the founders in the Myanmar hospitality and tourism business coupled by the expertise of the foreign executive director, Ayravata Cruises is not just a successful cruise operator but a shipbuilder as well. The company has a total of 60 staff, 50 employed as crew on board the two ships and 10 in the offices of Yangon and Mandalay.

Presently it operates two ships: RV Paukan 2007 (a newly built Charming Cruising Boutique Hotel) and RV Paukan 1947 (an original Scottish made Colonial Steamer formerly known as Rv Panfaw), a third ship RV Paukan 2012 is now under construction and supposed to be completed in the 2012.

Our boutique cruises on the Irrawaddy and Chindwin Rivers will unveil you the Myanmar cultural heritage, the ex Royal capitals, the lifestyle and traditions of the people living along their banks.



MANAGED BY AYRAVATA CRUISE COMPANY

CONTENTS

THE FLEET	4
IRRAWADDY DISCOVERY CRUISES	13
GOLDEN MYANMAR Cruise(10 Nights)	14
“Golden Myanmar”- Upstream * Prome to Mandalay (10 Nights)	14
“Golden Myanmar”- Downstream * Mandalay to Prome (10 Nights)	17
“The Royal Capitals”- Upstream * Bagan to Mandalay (5 Nights)	20
“The Royal Capitals” Downstream * Mandalay to Bagan (5 Nights)	22
MYANMAR DAYS CRUISE (10 Nights)	26
“Myanmar Days”- Upstream * Bagan to Mandalay via Upper Irrawaddy (10 Nights)	26
“Myanmar Days”- Downstream * Mandalay to Bagan via Upper Irrawaddy (10 Nights)	29
“The Upper Irrawaddy”- Mandalay to Mandalay (6 Nights)	32
“The Royal Myanmar”- Uptream * Bagan to Mandalay (4 Nights)	34
“The Royal Myanmar”- Downstream * Mandalay to Bagan (4 Nights)	36
SHORT DISCOVERY CRUISES	40
BETWEEN MANDALAY & BAGAN	40
From Royal Mandalay (Mingun & Sagaing) to Ancient Bagan (2 Nights)	41
Between Ancient Bagan and Royal Mandalay (2 Nights)	42
Between Royal Mandalay and Ancient Bagan (1Night)	42
EXPEDITION CRUISES	44
Grand Voyage of the Chindwin River (9 Nights)	44
SAILING DATES 2011-2012	52
Terms & Conditions	64
Passenger Ticket Contract	74



MANAGED BY AYRAVATA CRUISE COMPANY

THE FLEET

RV PAUKAN 2007

SPECIFICATIONS

BUILT IN YANGON 2007 BY AYRAVATA CRUISES AT MYANMA SHIPYARDS (YANGON-MYANMAR)

LENGTH	183 FT (55.78 MT)
BEAM	38 FT (11.58 MT)
DESIGN DRAFT	3.09 FT (1.14 MT)
DECKS	3
DIESEL ENGINES	2 x 425 HP CUMMINS MARINE / MODEL KT19-M425.
PROPULSION	SCHOTEL TYPE OUTBOARD * MODEL: NAV180
DESIGN SPEED	10 KNOTS
MAX. UPSTREAM SPEED	8 NAUTICAL MILES PER HOUR (DRY SEASON)
MAX. DOWNSTREAM SPEED	12 NAUTICAL MILES PER HOUR (DRY SEASON)
NAVIGATION	NAVIGATION LIGHTS, SHIPS HORN, SEARCHLIGHT
COMMS	GSM PHONE, INTERNAL PHONE SYSTEM, TANNOY FOR NAVIGATION
GENERATORS	2 x 175 KVA + 1 x 50 KVA CUMMINS/MARATHON MARINE
FIRE PROTECTION	SMOKE DETECTORS, HEAT DETECTORS, MANUAL ALARMS STATIONS, FIRE EXTINGUISHERS, FIRE HOSE CABINETS, FIRE PUMPS
SAFETY	EMERGENCY LIGHTS, EMERGENCY GENSET, LIFE JACKETS, LIFE RAFTS
CREW	30
<u>HOTEL</u>	
PASSENGERS	55
CABINS	29 WITH PRIVATE BATHROOM AND SHOWER
	<u>UPPER DECK</u>
	14 DELUXE (6 DOUBLE, 8 TWIN) * 21 SQ.MT/226 SQ. FT.
	2 SUITE (BOW) : 40 SQ.MT / 430 SQ. FT.
	<u>MAIN DECK</u>
	10 SUPERIOR TWINS * 15 SQ.MT./161 SQ. FT.
	<u>LOWER DECK</u>
	3 SINGLE FOR GUESTS: 10 SQ MT / 107 SQ. FT.
	4 SINGLE FOR GUIDES/TL: 8 SQ MT / 86 SQ. FT.
LOUNGE & BAR	ON THE SUNDECK/SOLARIUM (CAPACITY 35 SEATS)
DINING ROOM	ON THE MAIN DECK (CAPACITY: 56 SEATS)
MESSAGE ROOM	2 ON THE LOWER DECK
LECTURES ROOM	FULLY EQUIPPED WITH LCD PROJECTOR/LCD TV (35 SEATS)
WATER	DESEDIMENTATION AND FULL WATER TREATMENT – REVERSE OSMOSIS SYSTEM FOR THE KITCHEN



MANAGED BY AYRAVATA CRUISE COMPANY

ABOUT RV PAUKAN 2007

Paukan is the ancient name of Bagan, the old city of two thousand temples on the bank of the Irrawaddy River.

RV Paukan was built in 2007 at the Myanmar Shipyards in Yangon for Ayravata Cruises.

ON BOARD

The lovely Paukan is a boutique hotel on the river, beautifully furnished with a unique combination of modern and traditional motifs. The timber-walled cabins are furnished with colonial style cupboards, dresser and doors while the ceiling is traditional Myanmar. The single or double beds are proper and comfortable ones and not mere bunks, enough room for 55 passengers who will be looked after by a 30-member crew.

For luxury-living, Paukan has suites, deluxe or superior cabins as well as singles for guest or guides. There are two massage rooms on the lower deck offering traditional Myanmar massage designed to give soothing relaxation.

The sun deck has a stage for cultural performances, and a bar and lounge for relaxation and fun. The upper deck has a lecture / movie room with lcd projector and lcd TV screen.

Meals in the dining room on the main deck will include both East and West cuisine, and dinner menus of delicious dishes. Vegetarian meals can be prepared when informed in advance.

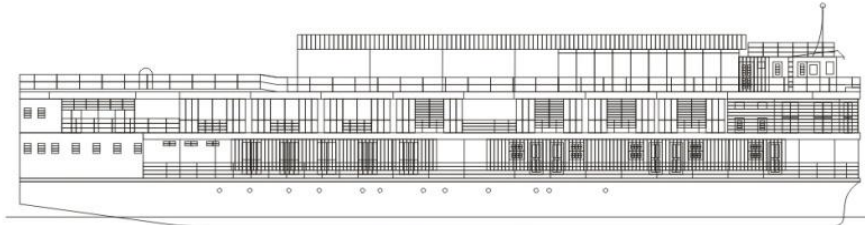


MANAGED BY AYRAVATA CRUISE COMPANY

Rv PAUKAN

2 0 0 7

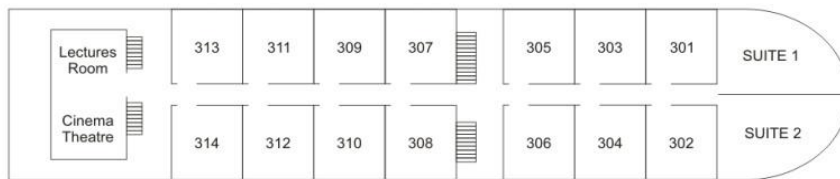
A Charming Cruising Boutique Hotel



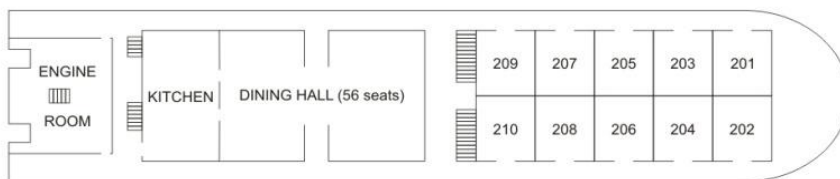
ELEVATION



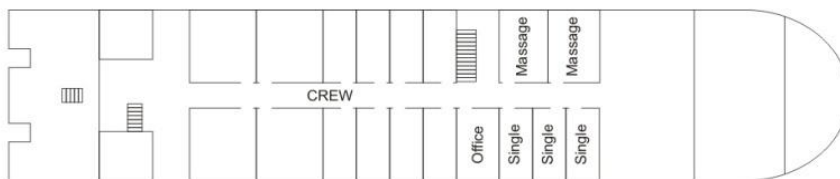
SUN DECK PLAN



UPPER DECK PLAN



MAIN DECK PLAN



LOWER DECK PLAN



MANAGED BY AYRAVATA CRUISE COMPANY

NEW!

RV PAUKAN 2012

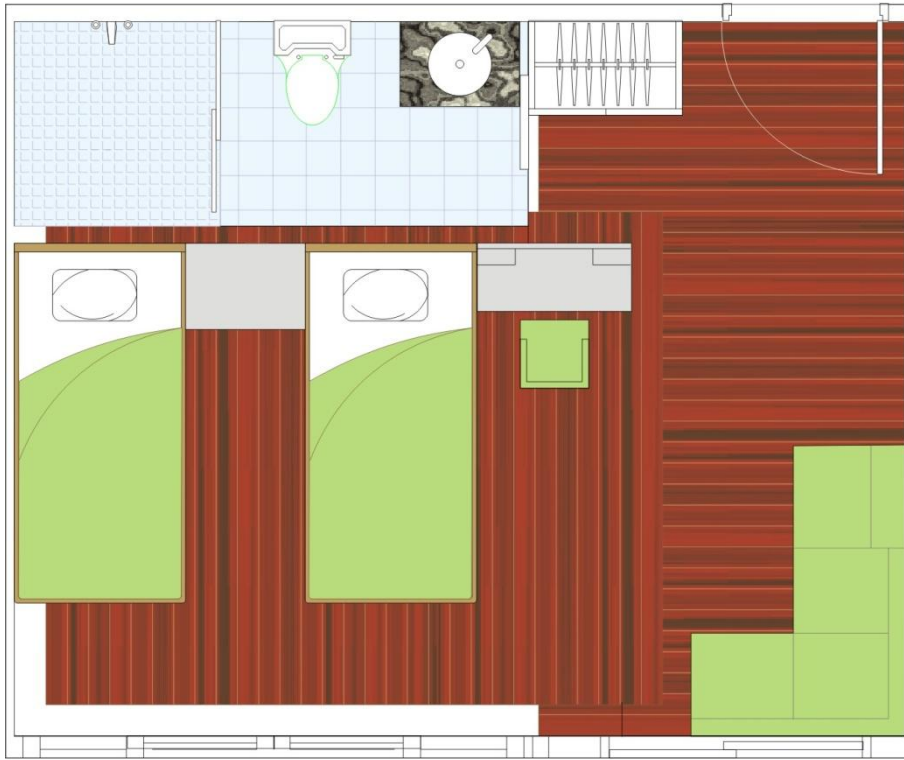
SPECIFICATIONS

UNDER CONSTRUCTION BY AYRAVATA CRUISES AT AHLONE SHIPYARD (YANGON) – TO BE COMPLETED IN MID-2012

HULL	MARINE STEEL
LENGTH	138 FT (42 MT)
BEAM	32.8 FT (10 MT)
DESIGN DRAFT	2.5 FT (0.76 MT)
DECKS	3
DIESEL ENGINES	2 X 275 HP CUMMINS MARINE / MODEL NT855-M270
PROPULSION	RUDDER PROPELLER INBOARD WELL MOUNTED
DESIGN SPEED	10 KNOTS
MAX. UPSTREAM SPEED	8 NAUTICAL MILES PER HOUR (DRY SEASON)
MAX. DOWNSTREAM SPEED	12 NAUTICAL MILES PER HOUR (DRY SEASON)
NAVIGATION	NAVIGATION LIGHTS, SHIPS HORN, SEARCHLIGHT
COMMS	GSM PHONE, INTERNAL PHONE SYSTEM, TANNOY FOR NAVIGATION
GENERATORS	2 X 120 KVA + 1 X 40 KVA CUMMINS/MARATHON MARINE
FIRE PROTECTION	SMOKE DETECTORS, HEAT DETECTORS, MANUAL ALARMS STATIONS, FIRE EXTINGUISHERS, FIRE HOSE CABINETS, FIRE PUMPS
SAFETY	EMERGENCY LIGHTS, EMERGENCY GENSET, LIFE JACKETS, LIFE RAFTS
CREW	20
<u>HOTEL</u>	
PASSENGERS	34
CABINS	18 WITH PRIVATE BATHROOM
	<u>UPPER DECK</u>
	6 DOUBLE DELUXE WITH BALCONY * 25 SQ.MT / 270 SQ. FT
	2 PREMIER WITH BALCONY : 25 SQ.MT / 270 SQ. FT.
	2 SINGLE : 10 SQ.MT / 107 SQ. FT.
	<u>MAIN DECK</u>
	8 TWIN DELUXE WITH FRENCH BALCONY * 23 SQ.MT./250 SQ. FT.
	<u>LOWER DECK</u>
	2 SINGLE FOR GUIDES/TL: 8 SQ MT / 86 SQ. FT.
DINING ROOM	ON THE MAIN DECK (CAPACITY: 34 SEATS)
LOUNGE & BAR	ON THE UPPER DECK (CAPACITY 16 SEATS INDOOR AND 15 OUTDOOR)
SOLARIUM	ON SUN / ROOF DECK (CAPACITY: 16 SUN CHAIRS)
WATER	DESEDIMENTATION AND FULL WATER TREATMENT – REVERSE OSMOSIS SYSTEM FOR THE KITCHEN



MANAGED BY AYRAVATA CRUISE COMPANY



Main Deck Cabin Floor Plan



Upper Deck Cabin Floor Plan



MANAGED BY AYRAVATA CRUISE COMPANY

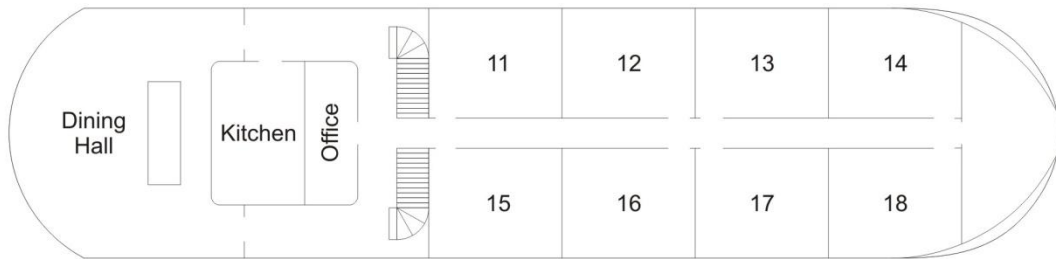
Rv PAUKAN

2 0 1 2

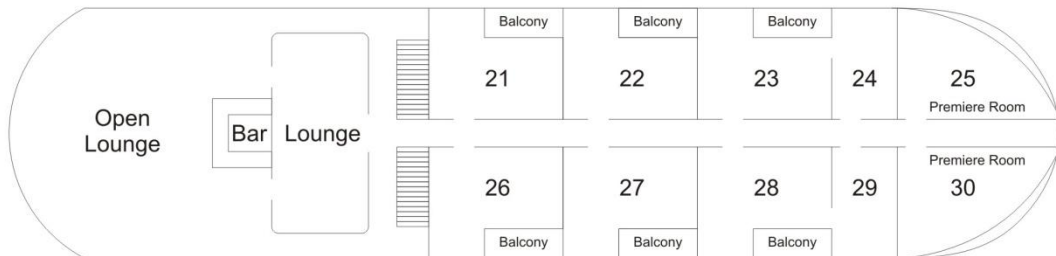
A Small Cruising Boutique Hotel



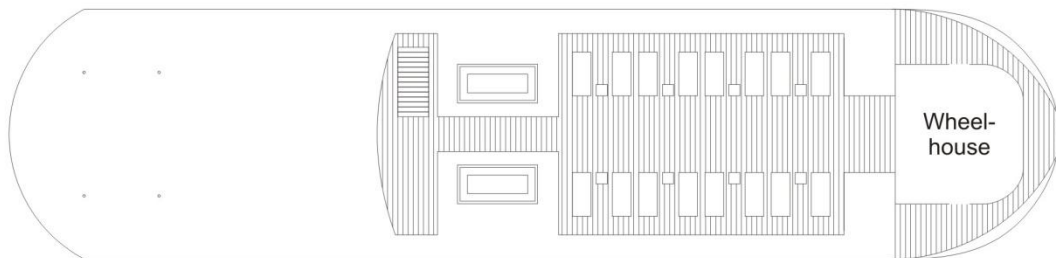
Elevation



Main Deck



Upper Deck



Sun Deck



MANAGED BY AYRAVATA CRUISE COMPANY

RV PAUKAN 1947 (FORMERLY RV PANDAW 1947)

SPECIFICATIONS

BUILT IN SCOTLAND 1947 (BY YARROW & CO. SCOTLAND), CONVERTED TO A PASSENGER CRUISE VESSEL 1997 BY IRRAWADDY FLOTILLA CO. REFITTED AND REFURBISHED 2003-04 BY IWT (INLAND WATER TRANSPORT) & AYRAVATA CRUISES

HULL	STEEL
LENGTH	150FT (45.72 MT)
BEAM	34FT (11.5 MT)
DRAFT	2.6FT (0.8 MT)
DECKS	3 MAIN DECK (6 CABINS)* UPPER DECK (10 CABINS-SALOON-DINING ROOM) * SUNDECK / SOLARIUM (LENGTH 20 MT - FURNISHED WITH STEAMER CHAIRS/SUN LOUNGES/ RATTAN ARMCHAIRS FOR 32 PAX)
DIESEL ENGINES	2 X 300HP MWM * MODEL: TBD-234V6
PROPULSION	SCHOTEL OUTBOARD * MODEL: SRP-100/110
MAX. UPSTREAM SPEED	6 MILES PER HOUR
MAX. DOWNSTREAM SPEED	11 MILES PER HOUR
NAVIGATION	NAVIGATION LIGHTS, SHIPS HORN, SEARCHLIGHT
COMMS	GSM PHONE, INTERNAL PHONE SYSTEM, TANNOY FOR NAVIGATION
GENERATORS	2 X 95 KVA DENYO GENSETS
FIRE PROTECTION	21 SMOKE DETECTORS, 4 HEAT DETECTORS, 8 MANUAL ALARMS STATIONS, ELECTRONIC CONTROL PANEL <i>SILENT KNIGHT (MADE IN USA)</i> – 20 FIRE EXTINGUISHERS – 8 FIRE HOSE CABINETS, FIRE PUMP
SAFETY	EMERGENCY LIGHTS, EMERGENCY GENERATOR, LIFE JACKETS FOR ALL ON BOARD AND LIFE RAFTS
<u>HOTEL</u>	
CABINS	16 DELUXE CABINS WITH OWN SHOWER/WC (BERTHS 32) SIZE: 3,35 MT X 4.00 MT (132" X 158")
BAR	1
DINING ROOM	1 (32 SEATS)
KITCHEN	1 FULLY EQUIPPED KITCHEN
WATER	DESEDIMENTATION AND FULL WATER TREATMENT – REVERSE OSMOSIS SYSTEM FOR THE KITCHEN.
SEWAGE	TREATMENT PLANT



MANAGED BY AYRAVATA CRUISE COMPANY

ABOUT PAUKAN1947 (FORMERLY RV PANDAW1947)

HISTORY

The Pandaw (as it was originally named) is an original colonial era twin screw steamer, built in 1947. The famous shipbuilding company of Yarrow & Co. of Clyde on the River in Glasgow built the Pandaw for the Irrawaddy Flotilla Company. Arriving in Myanmar in 1950, under the ownership of the Inland Water Transport Board (IWTB) she ran on the Irrawaddy River from Mandalay to Bhamo, one of the most popular routes on this great river.

She began a luxury life as a passenger cruiser in 1998, under the management of a new Irrawaddy Flotilla Company and was taken over in 2003 by Ayurvata Cruises after extensive renovations and refurbishing. The vessel was renamed Rv Paukan1947 in the 2011

ON BOARD

There are altogether 16 teak-walled deluxe cabins with proper beds and hot and cold showers. There is one main deck with cabins, an upper deck with cabins and a dining room at the stern and a salon at the prow.

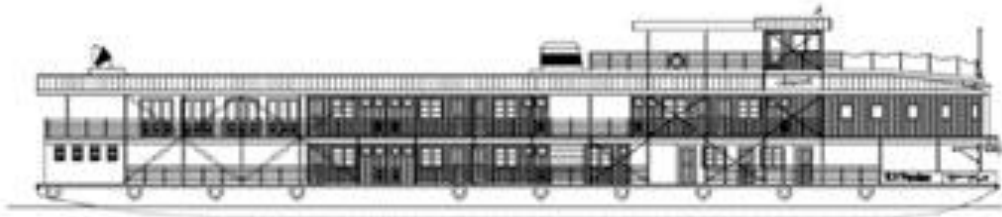


MANAGED BY AYRAVATA CRUISE COMPANY

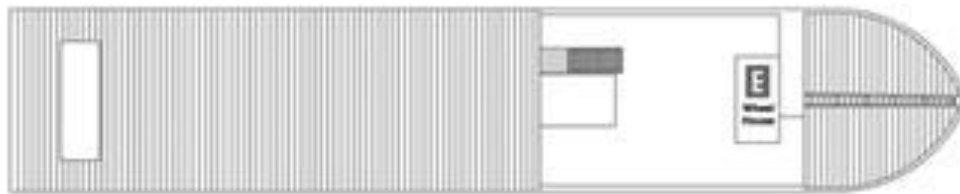
Rv PAUKAN

1 9 4 7

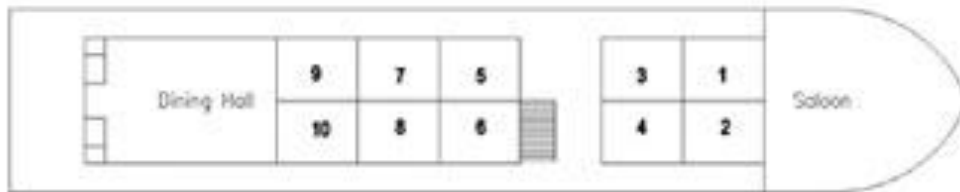
An Original 1947 Built Colonial Steamer



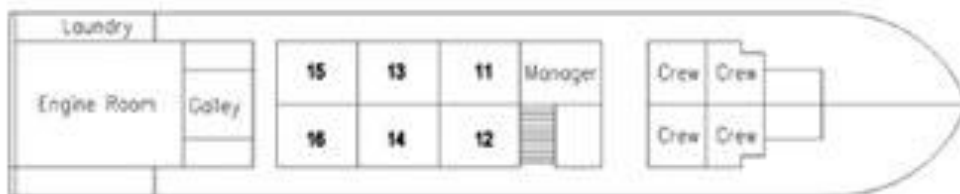
ELEVATION



SUN DECK



UPPER DECK



MAIN DECK



MANAGED BY AYRAVATA CRUISE COMPANY

IRRAWADDY DISCOVERY CRUISES

GOLDEN MYANMAR

OPERATED BY PAUKAN1947 OR **NEW** PAUKAN2012

The Irrawaddy River has witnessed the history of Myanmar and gave it life. On its banks are located all the “must see” highlights of the Golden Land from the city of Pyay (Prome), where the roots of the Bamar civilization can be found, to the Royal Capitals of Mandalay, Amarapura and Ava passing through the glorious city of Bagan with its 3,000 temples and pagodas where sat the First Myanmar Empire yond Mandalay the river wonderful second life

There is no better way to visit all Myanmar than taking a “boutique” cruise on the Irrawaddy in the comfort of our ships. No more long coach trips and the hassle to pack and unpack luggage.

We offer optional pre/post land arrangements in Yangon and to complete the visit of Myanmar an extension to Inle Lake which is not to be missed.

GOLDEN MYANMAR - 10 nights

UPSTREAM: PROME – THAYETMYO – MINHLA – MAGWE – SALAY - BAGAN – YANDABO – MONYWA- MINGUN -AVA- AMARAPURA - MANDALAY

DOWNSTREAM: MANDALAY-MINGUN- AVA – AMARAPURA – MONYWA-YANDABO-BAGAN-SALAY- MAGWE – MINHLA- THAYETMYO – PROME

THE ROYAL CAPITALS - 5 nights

UPSTREAM: BAGAN-YANDABO-MONYWA-MINGUN- AVA-AMARAPURA-MANDALAY

DOWNSTREAM: MANDALAY-MINGUN-AVA – AMARAPURA – MONYWA-YANDABO-BAGAN

MYANMAR DAYS **NEW!**

OPERATED BY **NEW** PAUKAN2012 OR PAUKAN1947

Discover Mandalay and its historic sites located along the river, sail up to the spectacular Irrawaddy 2nd Defile. The journey begins or ends at the historic capital of Bagan. Stops include visits of Ava, Amarapura, Mingun, the pottery village of Kyaw Myaung and the colonial town of Katha.

We offer optional pre/post land arrangements in Yangon and to complete the visit of Myanmar an extension to Inle Lake which is not to be missed.

MYANMAR DAYS - 10 nights

UPSTREAM: BAGAN-YANDABO - MONYWA - AVA – AMARAPURA- UPPER IRRAWADDY (KYAW MYAUNG- SECOND DEFILE- KATHA) - MINGUN- MANDALAY

DOWNSTREAM: MANDALAY - UPPER IRRAWADDY (KYAW MYAUNG-SECOND DEFILE- KATHA) - MINGUN – AVA - AMARAPURA - MONYWA - YANDABO - BAGAN

UPPER IRRAWADDY- 6 nights

MANDALAY- UPPER IRRAWADDY (KYAW MYAUNG- SECOND DEFILE-KATHA) - MINGUN- MANDALAY

ROYAL MYANMAR - 4 nights

UPSTREAM: BAGAN-YANDABO - MONYWA - AVA – AMARAPURA - MANDALAY

DOWNSTREAM: MANDALAY – AVA – AMARAPURA - MONYWA - YANDABO – BAGAN



MANAGED BY AYRAVATA CRUISE COMPANY

GOLDEN MYANMAR

BETWEEN PROME AND MANDALAY

11 Days / 10 Nights RV PAUKAN 1947 (FORMERLY RV PANDAW1947)

UPSTREAM

DAY 1

YANGON – PROME (PYAY)

Drive to **Prome** by coach and embark the ship. Once controlled by the Mon during the Bagan Era and then conquered by the Burmese King Alaungpaya in the 1754, this quiet town boomed along with the Irrawaddy Flotilla Company in the 1890's and it is now an important trading post. In the afternoon we drive to **Thayekhittaya** (also known as Sri Ksetra, the "Fabulous city" in Pali language), an ancient Pyu city that ruled in this area between the 5th and the 9th century AD. In central Prome if time permits we visit the impressive **Shwesandaw Pagoda complex**, one of the most important Buddhist pilgrimage site of Myanmar, and the **Wunchataung Paya** (Apology Mountain Pagoda) a vantage point of the Shwesandaw Pagoda and the surrounding mountains.

DAY 2

THAYETMYO

Early Morning exploration of **Thayetmyo**: the oldest golf course of Myanmar, the market and the old colonial houses. Proceed cruising upstream. Moor overnight off Minhla.

DAY 3

ITALIAN FORTS

In the morning we reach **Minhla** and **Gwechaung** by local boat. Visit the two forts built by two Italian Military Engineers for the Burmese King in order to keep the British at bay from Royal Myanmar at the time of the 2nd Anglo-Burmese War. We arrive at **Magwe** in the afternoon. Visit **Myat Than Lun Paya**, a 1929 built pagoda of gold solid bricks set on a hilltop with a beautiful view of the river. If time permits we drive to **Minbu** a small village across the river where we explore the Nga Ka Pwe Taung (Dragon Lake), a burping pond of Butane Gas set in a moon-like plot of land with bubbling pools.

DAY 4

MAGWE

Visit the **Magwe** picturesque market by trishaw. Sail all day upstream.

DAY 5

SALAY & TAN KYI MOUNTAIN

Visit **Salay**, a village founded in the 13th century with Bagan-era shrines, beautiful 19th century teak monasteries and preserved British colonial buildings. Continue Upstream to the village of **Tan Kyi**. Reach the mountaintop by WW2 jeep where stands one of the four stupas that marked the original edges of the city and enjoy a marvelous sunset over Bagan plain.

DAY 6

BAGAN

Full day visit of a selection of the 2,000 listed pagodas and temples. Lunch on board and in the afternoon continue the exploration of the archeological area. Dinner on board or in a local restaurant. Overnight on board.



MANAGED BY AYRAVATA CRUISE COMPANY

DAY 7

BAGAN – RIVER VILLAGE

Explore some of Bagan's local markets selling wood carvings, fabrics, longyis and rattan products .Visit a workshop to see the ancient technique of lacquerware making. Alternatively passengers can hire a horse cart or a bicycle and explore the site on their own or have a splendid Balloon Flight over Bagan (surcharge applied - optional). Back to the ship around Noon and cast off. We cruise upstream all day. Stop at **Shwe Pyi Thar village** for a walk. Dinner followed by a Puppet Show performance in the village or sundeck.

DAY 8

YANDABO

In the morning we arrive at **Yandabo**, a picturesque village that specializes in Pot-Making, where the peace treaty of the First Anglo-Burmese war signed on Feb. 24, 1826. We go ashore for a walk stopping at some pot-making workshops and to visit the school and the monastery. We cruise upstream the rest of the day, moor overnight at Myin Mu jetty.

DAY 9

MONYWA (HPOWINDAUNG AND SHWEBADAUNG CAVES)

Early morning drive by coach (approx. 1 ½ hours) to **Monywa** to visit the Hpowindaung and Shwebadaung caves where hundreds of Buddha Statues are placed inside niches decorated with wonderful mural paintings dated back to the . After lunch we visit the splendid **Sambuddhai Kat Kyaw pagoda** with its more than 500,000 Buddha images. Drive to Sagaing (2 hours) where we will rejoin the ship. Cruise upstream. Dinner and overnight on board.

DAY 10

MINGUN - AVA - AMARAPURA

After an early breakfast visit **Mingun** the unfinished pagoda, the largest working bell in the world and the “home for the aged”. After lunch we explore **Ava** by horse-cart visiting the beautiful 200 year old teak **Bagaya Kyaung Monastery**, **Nanmyin watchtower** (27mt. high) and the **Me Nu Ok Kyaung monastery**. We travel then by sampan and coach to **Amarapura**, the penultimate Burmese Royal Capital (1783) to visit **U-Bein Bridge** at sunset. Moor overnight at Sagaing. Dance and Theatre performance on the Sundeck.

DAY 11

CENTRAL MANDALAY - DISEMBARK GAWEIN JETTY

After breakfast, visit central Mandalay: **Mahamuni Pagoda**, **Mandalay Hill** where spiraling staircases lead to sweeping views of the city and its temples and the nearby **Kuthodaw Paya**, which contains the world's biggest book, the workshops of gold leaf making, tapestry making, woodcarving, marble carving and bronze casting. Lunch on board. Disembark and transfer to the airport for your onward flight (Yangon or Heho Inle Lake).



MANAGED BY AYRAVATA CRUISE COMPANY

PRE AND POST UPSTREAM CRUISE TOUR

TOUR CODE GMU_PP1.2

YANGON STOPOVER

Duration: 2 nights / 3 Days

DAY 1 BEFORE THE CRUISE

RANGOON (YANGON)

International arrival to Yangon, transfer to the Hotel. Lunch in the hotel. In the afternoon orientation tour of the city ending with the visit of the most enchanting and spectacular Pagoda of Myanmar: **the Shwedagon**. Overnight at the historic **Strand Hotel** or Chatrium.

DAY 1 AFTER THE CRUISE

MANDALAY– YANGON

Flight to Yangon. Check in at the Strand Hotel or Chatrium.

DAY 2 AFTER THE CRUISE

YANGON - DEPARTURE

In the morning drive through **Colonial downtown** and visit the 1926-built Bogyoke Aung San market (formerly **Scott's Market**) dominated by antique, Burmese handicraft and jewellery shops, art galleries, and clothing followed by **Sule Paya**. International departures.



MANAGED BY AYRAVATA CRUISE COMPANY

DOWNSTREAM

DAY 1

MANDALAY - MINGUN

Our representative and guide will meet the guests upon arrival at **Mandalay** airport between 07.30/08.00 am. Visit central Mandalay: **Mahamuni Pagoda, Mandalay Hill** where spiraling staircases lead to sweeping views of the city and its temples and the nearby **Kuthodaw Paya**, which contains the world's biggest book, the workshops of gold leaf making, tapestry making, woodcarving, marble carving and bronze casting.

Embark the ship at Gawein Jetty before lunch. Welcome cocktail in the saloon and sail upstream to **Mingun**. Visit the unfinished pagoda, the largest working bell in the world and the "home for the aged". Dinner and overnight on board.

DAY 2

AVA – AMARAPURA

After breakfast we explore **Ava** by horse-cart visiting the beautiful 200 year old teak **Bagaya Kyaung Monastery, Nanmyin watchtower** (27mt. high) and the **Me Nu Ok Kyaung monastery**. We travel then by sampan and coach to **Amarapura**, the penultimate Burmese Royal Capital (1783) to visit **U-Bein Bridge** at sunset. Moor overnight at Sagaing. Dance and Theatre performance on the Sundeck.

DAY 3

MONYWA (HPOWINDAUNG AND SHWEBADAUNG CAVES)

Early morning drive by coach (approx. 2 ½ hours) to **Monywa** to visit the Hpowindaung and Shwebadaung caves where hundreds of Buddha Statues are placed inside niches decorated with wonderful mural paintings dated back to the . After lunch we visit the splendid **Sambuddhai Kat Kyaw pagoda** with its more than 500,000 Buddha images. Drive to Myin Mu jetty (approx. 1 ½ hours) where we will rejoin the ship. Dinner and overnight on board.

DAY 4

YANDABO

In the morning we arrive at **Yandabo**, a picturesque village that specializes in Pot-Making, where the peace treaty of the First Anglo-Burmese war signed on Feb. 24, 1826. We go ashore for a walk stopping at some pot-making workshops and to visit the school and the monastery.

Continue cruising downstream with an afternoon stop at **Shwe Pyi Thar village** for a walk.

Moor overnight midriver.

DAY 5

BAGAN

We arrive at **Bagan** in the early morning. Full day visit of a selection of the 2,000 listed pagodas and temples. Lunch on board and in the afternoon continue the exploration of the archeological area.

Dinner on board or in a local restaurant. Overnight on board.

DAY 6

BAGAN – TAN KYI MOUNTAIN

Explore some of Bagan's local markets selling wood carvings, fabrics, longyis and rattan products .Visit a workshop to see the ancient technique of lacquerware making. Alternatively guests can hire a horse



MANAGED BY AYRAVATA CRUISE COMPANY

cart or a bicycle and explore the site on their own or have a splendid Balloon Flight over Bagan (surcharge applied - optional).

Cast off at 15.30 hrs and sail downstream to reach the village of **Tan Kyi** on the opposite side of the river. Reach the mountaintop by WW2 jeep where stands one of the four stupas that marked the original edges of the city and enjoy a marvelous sunset over Bagan plain.

DAY 7

SALAY

Sail downstream to **Salay**, a 7,000 resident village founded in the 13th century with Bagan-era shrines, beautiful 19th century teak monasteries and preserved British colonial buildings. We visit the huge **Youqson Kyaung** wooden monastery designed as a copy of the Crown Prince House of Mandalay; we explore then an area of colonial buildings and some interesting Bagan-era monuments such as **Payathonzu** and the **Shinpinsarkyo Paya**. Back to the ship for lunch and proceed south to **Magwe**.

DAY 8

MAGWE – ITALIAN FORTS

Early morning visit **Myat Than Lun Paya**, a 1929 built pagoda set on a hilltop with a beautiful view of the river. We drive then to **Minbu** a small village across the river where we explore the **Nga Ka Pwe Taung (Dragon Lake)**, a burping pond of Butane Gas set in a moon-like plot of land with bubbling pools. Back to the boat and cast off before lunchtime. Stop in **Minhla** and **Gwechaung** to visit the two forts built by two Italian Military Engineers for the Burmese King in order to keep the British at bay from Royal Myanmar at the time of the 2nd Anglo-Burmese War. Proceed downstream to Thayetmyo, a pleasant colonial town.

DAY 9

THAYETMYO – PROME-(PYAY)

Early Morning exploration of **Thayetmyo**: the oldest golf course of Myanmar, the market and the old colonial houses. Proceed sailing downstream. In late evening we arrive in **Prome (Pyay)** Once controlled by the Mon during the Bagan Era and then conquered by the Burmese King Alaungpaya in the 1754, this quiet town located 8 Km West of the famous ancient Pyu capital of Thayekhittaya, boomed along with the Irrawaddy Flotilla Company in the 1890's and it is now an important trading post.

DAY 10

PROME (THAYEKHITTAYA)

Drive to **Thayekhittaya** (also known as Sri Ksetra, the “fabulous city” in Pali language), a huge ancient Pyu city that ruled in this area between the 5th and the 9th century AD. We visit also the impressive **Shwesandaw Pagoda complex**, one of the most important Buddhist pilgrimage sites of Myanmar, and the **Wunchataung Paya** (Apology Mountain Pagoda) a vantage point of the Shwesandaw Pagoda and the surrounding mountains.

DAY 11

PROME- YANGON (BY COACH)

Disembark and drive by coach to Yangon. Transfer to Hotel or Airport.



MANAGED BY AYRAVATA CRUISE COMPANY

PRE AND POST DOWNSTREAM CRUISE TOUR

TOUR CODE GMD_PP1.2

YANGON STOPOVER

Duration: 2 nights / 3 Days

DAY 1 BEFORE THE CRUISE

RANGOON (YANGON)

International arrival to Yangon, transfer to the Hotel. Lunch in the hotel. In the afternoon orientation tour of the city ending with the visit of the most enchanting and spectacular Pagoda of Myanmar: **the Shwedagon**. Overnight at the historic **Strand Hotel** or Chatrium.

DAY 2 BEFORE THE CRUISE

RANGOON (YANGON) – MANDALAY (BY FLIGHT)

Transfer to the airport. Flight to Mandalay. Transfer to jetty.

DAY 1 AFTER THE CRUISE

YANGON

Check-in to **the Strand Hotel** or Chatrium. Lunch. In the afternoon we drive through **Colonial downtown** and visit the 1926-built Bogyoke Aung San market (formerly **Scott's Market**) dominated by antique, Burmese handicraft and jewellery shops, art galleries, and clothing followed by **Sule Pagoda**.

DAY 2 AFTER THE CRUISE

YANGON - DEPARTURE

International departures.



MANAGED BY AYRAVATA CRUISE COMPANY

THE ROYAL CAPITALS

BAGAN – YANDABO – MONYWA – MINGUN – AVA – AMARAPURA - MANDALAY

6 Days / 5 Nights RV PAUKAN 1947 (FORMERLY RV PANDAW1947)

UPSTREAM

DAY 1

BAGAN

Our representative and guide will meet the guests upon arrival at **Bagan** airport between 07:30/08:00 am. Full day visit of a selection of the 2,000 listed pagodas and temples. Embark the ship before lunch; after continue the exploration of the archeological area. Dinner on board or in a local restaurant. Overnight on board.

DAY 2

BAGAN – RIVER VILLAGE

Explore some of **Bagan's** local markets selling wood carvings, fabrics, longyis and rattan products. Visit a workshop to see the ancient technique of lacquerware making. Alternatively guests can hire a horse cart or a bicycle and explore the site on their own (or) have a splendid Balloon Flight over Bagan (surcharge applied - optional). Back to the ship around Noon and cast off. We cruise upstream all day. Stop at **Shwe Pyi Thar village** for a walk. Dinner followed by a Puppet Show performance in the village or sundeck.

DAY 3

YANDABO

In the morning we arrive at **Yandabo**, a picturesque village that specializes in Pot-Making, where the peace treaty of the First Anglo-Burmese war signed on Feb. 24, 1826. We go ashore for a walk stopping at some pot-making workshops and to visit the school and the monastery. We cruise upstream the rest of the day, moor overnight at Myin Mu jetty.

DAY 4

MONYWA (HPOWINDAUNG AND SHWEBADAUNG CAVES) - SAGAING

Early morning drive by coach (approx. 1 ½ hours) to **Monywa** to visit the Hpowindaung and Shwebadaung caves where hundreds of Buddha Statues are placed inside niches decorated with wonderful mural paintings dated back to the . After lunch we visit the splendid **Sambuddhai Kat Kyaw pagoda** with its more than 500,000 Buddha images. Drive to Sagaing (2 hours) where we will rejoin the ship. Cruise upstream. Dinner and overnight on board.

DAY 5

MINGUN - AVA - AMARAPURA

After an early breakfast visit **Mingun** the unfinished pagoda, the largest working bell in the world and the “home for the aged”. After lunch we explore **Ava** by horse-cart visiting the beautiful 200 year old teak **Bagaya Kyaung Monastery**, **Nanmyin watchtower** (27mt. high) and the **Me Nu Ok Kyaung monastery**. We travel then by sampan and coach to **Amarapura**, the penultimate Burmese Royal Capital (1783) to visit **U-Bein Bridge** at sunset. Moor overnight at Sagaing. Dance and Theatre performance on the Sundeck.



MANAGED BY AYRAVATA CRUISE COMPANY

DAY 6

DISEMBARK GAWEIN JETTY – CENTRAL MANDALAY

After breakfast, visit central Mandalay: **Mahamuni Pagoda, Mandalay Hill** where spiraling staircases lead to sweeping views of the city and its temples and the nearby **Kuthodaw Paya**, which contains the world's biggest book, the workshops of gold leaf making, tapestry making, woodcarving, marble carving and bronze casting. Lunch on board or in a local restaurant. Disembark and transfer to the airport for your onward flight (Yangon or Heho Inle Lake).

PRE AND POST UPSTREAM CRUISE TOUR

TOUR CODE RCU_PP1.2

YANGON STOPOVER

Duration: 2 nights / 3 Days

DAY 1 BEFORE THE CRUISE

RANGOON (YANGON)

International arrival to Yangon, transfer to the Hotel. Lunch in the hotel. In the afternoon orientation tour of the city ending with the visit of the most enchanting and spectacular Pagoda of Myanmar: **the Shwedagon**. Overnight at the historic **Strand Hotel** or Chatrium Hotel.

DAY 2 BEFORE THE CRUISE

RANGOON (YANGON) – BAGAN (BY FLIGHT)

Early morning transfer to the airport. Flight to Bagan. Transfer to jetty.

DAY 1 AFTER THE CRUISE

MANDALAY – YANGON (BY FLIGHT)

Disembark at Mandalay. Flight to Yangon. Check-in to **the Strand Hotel** or Chatrium Hotel.

DAY 2 AFTER THE CRUISE

YANGON - DEPARTURE

In the morning drive through **Colonial downtown** and visit the 1926-built Bogyoke Aung San market (formerly **Scott's Market**) dominated by antique, Burmese handicraft and jewellery shops, art galleries, and clothing followed by **Sule Paya**. International departures.



MANAGED BY AYRAVATA CRUISE COMPANY

DOWNSTREAM

DAY 1

MANDALAY - MINGUN

Our representative and guide will meet all guests upon arrival at **Mandalay** airport between 07.30/08.00 am. Visit central Mandalay: **Mahamuni Pagoda, Mandalay Hill** where spiraling staircases lead to sweeping views of the city and its temples and the nearby **Kuthodaw Paya**, which contains the world's biggest book, the workshops of gold leaf making, tapestry making, woodcarving, marble carving and bronze casting.

Embark the ship at Gawein Jetty before lunch. Welcome cocktail in the saloon and sail upstream to **Mingun**. Visit the unfinished pagoda, the largest working bell in the world and the "home for the aged". Dinner and overnight on board.

DAY 2

AVA – AMARAPURA

After breakfast we explore **Ava** by horse-cart visiting the beautiful 200 year old teak **Bagaya Kyaung Monastery, Nanmyin watchtower** (27mt. high) and the **Me Nu Ok Kyaung monastery**. We travel then by sampan and coach to **Amarapura**, the penultimate Burmese Royal Capital (1783) to visit **U-Bein Bridge** at sunset. Moor overnight at Sagaing.

Dance and Theatre performance on the Sundeck.

DAY 3

MONYWA (HPOWINDAUNG AND SHWEBADAUNG CAVES)

Early morning drive by coach (approx. 2 ½ hours) to **Monywa** to visit the Hpowindaung and Shwebadaung caves where hundreds of Buddha Statues are placed inside niches decorated with wonderful mural paintings dated back to the . After lunch we visit the splendid **Sambuddhai Kat Kyaw pagoda** with its more than 500,000 Buddha images. Drive to Myin Mu jetty (approx. 1 ½ hours) where we will rejoin the ship. Dinner and overnight on board.

DAY 4

YANDABO

In the morning we arrive at **Yandabo**, a picturesque village that specializes in Pot-Making, where the peace treaty of the First Anglo-Burmese war signed on Feb. 24, 1826. We go ashore for a walk stopping at some pot-making workshops and to visit the school and the monastery.

Continue cruising downstream with an afternoon stop at **Shwe Pyi Thar village** for a walk.

Moor overnight mid-river.

DAY 5

BAGAN

We arrive at **Bagan** in the early morning. Full day visit of a selection of the 2,000 listed pagodas and temples. Lunch on board and in the afternoon continue the exploration of the archeological area.

Dinner on board or in a local restaurant. Overnight on board.

DAY 6

BAGAN (DISEMBARK)

Explore some of Bagan's local markets selling wood carvings, fabrics, longyis and rattan products .Visit a workshop to see the ancient technique of lacquerware making. Alternatively guests can hire a horse



MANAGED BY AYRAVATA CRUISE COMPANY

cart or a bicycle and explore the site on their own (or) have a splendid Balloon Flight over Bagan (surcharge applied - optional). Lunch on board or in a local restaurant. Disembark and then transfer to the airport for your onward flight (Yangon or Heho Inle Lake)

PRE AND POST DOWNSTREAM CRUISE TOUR

TOUR CODE RCD_PP1.2

YANGON STOPOVER

Duration: 2 nights / 3 Days

DAY 1 BEFORE THE CRUISE

RANGOON (YANGON)

International arrival to Yangon, transfer to the Hotel. Lunch in the hotel. In the afternoon orientation tour of the city ending with the visit of the most enchanting and spectacular Pagoda of Myanmar: **the Shwedagon**. Overnight at the historic **Strand Hotel** or Chatrium Hotel.

DAY 2 BEFORE THE CRUISE

RANGOON (YANGON) – MANDALAY (BY FLIGHT)

Early morning transfer to the airport. Flight to Mandalay. Transfer to jetty.

DAY 1 AFTER THE CRUISE

BAGAN – YANGON (BY FLIGHT)

Flight to Yangon. Check-in to **the Strand Hotel** or Chatrium Hotel.

DAY 2 AFTER THE CRUISE

YANGON - DEPARTURE

In the morning drive through **Colonial downtown** and visit the 1926-built Bogyoke Aung San market (formerly **Scott's Market**) dominated by antique, Burmese handicraft and jewellery shops, art galleries, and clothing followed by **Sule Paya**. International departures.



MANAGED BY AYRAVATA CRUISE COMPANY

RETAIL RATES

Per person in US\$ valid from OCTOBER 2012 to MARCH 2013

GOLDEN MYANMAR

10 Nights Cruise

Main Deck	Twin US\$4,240	Twin Single use US\$5,570	
Upper Deck	Twin US\$4,440	Twin Single use US\$5,770	Single (*) US\$4,440
Premiere Bow (*)	Twin US\$6,345	Premiere Bow Twin Single use (*)	US\$12,690

(*) Paukan2012 only

Pre/Post Cruise Package (GMU PP1.2 - GMD PP1.2)

STRAND HOTEL			
Twin/Double Deluxe Suite	US\$ 1,185	Twin/Double Deluxe Suite Single use	US\$ 1,575
CHATRIUM HOTEL			
Twin/Double Superior	US\$ 540	Twin/Double Superior Single use	US\$ 660

THE ROYAL CAPITALS

5 Nights Cruise

Main Deck	Twin US\$2,120	Twin Single use US\$2,785	
Upper Deck	Twin US\$2,220	Twin Single use: US\$2,885	Single (*) US\$2,220
Premier Bow (*)	Twin US\$3,170	Premier Bow Twin Single use (*)	US\$6,340

(*) Paukan2012 only

Pre/post cruise Package (RCU PP1.2 - RCD PP1.2)

STRAND HOTEL			
Twin/Double Deluxe Suite	US\$ 1,380	Twin/Double Deluxe Suite Single use	US\$ 1,770
CHATRIUM HOTEL			
Twin/Double Superior	US\$ 735	Twin/Double Superior Single use	US\$ 855

IMPORTANT NOTE: For All departures should the occupancy be less than 12 PASSENGERS the Company reserves the right to cancel the cruise up to 60 days prior the departure date. A written confirmation notice will be released to all booked clients and/or their agents within and not later than 60 days prior the departure date.

CRUISE PRICE INCLUDES All meals &, Coffee/Tea/Water - Sightseeing as described in the Itinerary – Ayravata Cruises English Speaking Guide (additional non-English speaking guide is provided if more than 8 cabins are booked by parties speaking the same language) - All Entrance Fees – *Transfer by coach to/from Prome*

CRUISE PRICE EXCLUDES Drinks, laundry, all items of a personal nature; health-accident-baggage or travel protection plan outside the ship's boundaries, fuel surcharges if applicable (*)

(*) Within the above rates the fuel cost is calculated on the Myanmar Market average price of the months of April 2011 (i.e. USD 4 per imperial gallon). Should the fuel price rise by more than 10%, AYRAVATA CRUISES will be entitled to impose a fuel surcharge equivalent to the amount by which the fuel price exceeds the price allowed for in the above rates, provided that the notice of this rise is given to the Passenger and/or his-her Agent within 30 days prior the cruise departure date.



MANAGED BY AYRAVATA CRUISE COMPANY

Pre-Post Cruise Package Price includes 1+1 night accommodation at the Strand or Chatrium Hotel – Meals (Sightseeing as described in the Itinerary –English Speaking Guide (other languages with supplement) - All Entrance Fees – Transfers – Flights as mentioned in the program

Pre-Post Cruise Package Price excludes Drinks, laundry, all items of a personal nature; travel insurance, Compulsory meals and other supplements during holiday / festive season.



MANAGED BY AYRAVATA CRUISE COMPANY

MYANMAR DAYS

BAGAN - MONYWA - AVA - AMARAPURA - UPPER IRRAWADDY (KATHA, SECOND DEFILE) – MINGUN - MANDALAY

11 Days / 10 Nights on **NEW** RV PAUKAN 2012

UPSTREAM

DAY 1

BAGAN

Our representative and guide will meet all guests upon arrival at Bagan airport between 07.30/08.00 am. Full day visit of a selection of the 2,000 listed pagodas and temples. Embark the ship before lunch; after continue the exploration of the archeological area. Dinner on board. Overnight on board.

DAY 2

BAGAN – RIVER VILLAGE

Explore some of Bagan's local markets selling wood carvings, fabrics, longyis and rattan products. Visit a workshop to see the ancient technique of lacquerware making. Alternatively guests can hire a horse cart or a bicycle and explore the site on their own or have a splendid Balloon Flight over Bagan (surcharge applied - optional). Back to the ship around Noon and cast off. We cruise upstream all day. Stop at **Shwe Pyi Thar village** for a walk. Dinner followed by a Puppet Show performance in the village or sundeck.

DAY 3

YANDABO

In the morning we arrive at **Yandabo**, a picturesque village that specializes in Pot-Making, where the peace treaty of the First Anglo-Burmese war signed on Feb. 24, 1826. We go ashore for a walk stopping at some pot-making workshops and to visit the school and the monastery. We cruise upstream the rest of the day, moor overnight at Myin Mu jetty.

DAY 4

MONYWA (HPOWINDAUNG AND SHWEBADAUNG CAVES)

Early morning drive by coach (approx. 1½ hours) to **Monywa** to visit the Hpowindaung and Shwebadaung caves where hundreds of Buddha Statues are placed inside niches decorated with wonderful mural paintings dated back to the . After lunch we visit the splendid **Sambuddhai Kat Kyaw pagoda** with its more than 500,000 Buddha images. Drive to Sagaing (2 hours) where we will rejoin the ship. Dinner and overnight on board

DAY 5

AVA – AMARAPURA

We explore **Ava** by horse-cart visiting the beautiful 200 year old teak **Bagaya Kyaung Monastery**, **Nanmyin watchtower** (27mt. high) and the **Me Nu Ok Kyaung monastery**. We travel by sampan and coach to **Amarapura**, the penultimate Burmese Royal Capital (1783) to visit **U-Bein Bridge** Back to the ship at lunchtime and cast off.



MANAGED BY AYRAVATA CRUISE COMPANY

DAY 6

KYAUK MYAUNG

After breakfast, arrive the spectacular **potteries-making village of Kyauk Myaung** and see the manufacture stages of the famous **50 Gallons (200 liters) pots**. Sail all day. Moor overnight at mid-stream.

DAY 7

TAGAUNG

Stop at **Tagaung** to explore the **ancient city** archaeological area and the fortifications around 9:00 am. Continue cruising upstream for the rest of the day. Moor overnight midstream.

DAY 8

2ND DEFILE (GORGE)

Sail all day and we enter the **dramatic 2nd defile** with its magnificent cliffs reaching down the narrow channel around early evening. After entering a few hours, enjoy the **typical view surrounded by the mountains along the river**. Sail up to Sint Khan Village and return journey to Downstream. Sail all evening up to 10:00 pm. Moor overnight at midstream.

DAY 9

KATHA

After breakfast we arrive in the colonial town of **Katha**, the setting for George Orwell's book "**Burmese Days**" and also the place where in the 1942 hundreds of Irrawaddy Flotilla Company ships were scuttled before the Japanese could seize them. We explore the old streets and the market by trishaw and an **Elephant Logging Camp** located on the surrounding hardwood forest. If time permits we will also visit the **lake Indaw** to experience a typical Kachin highland scenery rich in bird life.

DAY 10

MINGUN

Full day cruising downstream with stop for a walk to a river village.

In the afternoon, we arrive in **Mingun** and visit the unfinished pagoda, the largest working bell in the world and the "home for the ages". Drama performance by the Mandalay Arts School on the sundeck.

DAY 11

MANDALAY (GAWEIN JETTY) – CENTRAL MANDALAY

After breakfast, visit central Mandalay: **Mahamuni Pagoda, Mandalay Hill** where spiraling staircases lead to sweeping views of the city and its temples and the nearby **Kuthodaw Paya**, which contains the world's biggest book, the workshops of gold leaf making, tapestry making, woodcarving, marble carving and bronze casting. Lunch on board or in a local restaurant. Disembark and transfer to the airport for your onward flight (Yangon or Heho Inle Lake).



MANAGED BY AYRAVATA CRUISE COMPANY

PRE AND POST DOWNSTREAM CRUISE TOUR

TOUR CODE MDA_PP1.2

YANGON STOPOVER

Duration: 2 nights / 3 Days

DAY 1 BEFORE THE CRUISE

RANGOON (YANGON)

International arrival to Yangon, transfer to the Hotel. Lunch in the hotel. In the afternoon orientation tour of the city ending with the visit of the most enchanting and spectacular Pagoda of Myanmar: **the Shwedagon**. Overnight at the historic **Strand Hotel** or Chatrium Hotel.

DAY 2 BEFORE THE CRUISE

RANGOON (YANGON) – BAGAN (BY FLIGHT)

Early morning transfer to the airport. Flight to Bagan. Transfer to jetty.

DAY 1 AFTER THE CRUISE

MANDALAY – YANGON (BY FLIGHT)

Disembark at Mandalay. Transfer to the airport for the flight to Yangon (or Heho for the Inle Extension tour). Check-in to **the Strand Hotel** or Chatrium.

DAY 2 AFTER THE CRUISE

YANGON - DEPARTURE

In the morning drive through **Colonial downtown** and visit the 1926-built Bogyoke Aung San market (formerly **Scott's Market**) dominated by antique, Burmese handicraft and jewellery shops, art galleries, and clothing followed by **Sule Paya**. International departures.



MANAGED BY AYRAVATA CRUISE COMPANY

DOWNSTREAM

DAY 1

MANDALAY

Our representative and guide will meet the guests upon arrival at Mandalay airport between 07.30/08.00 am.

Visit central Mandalay: **Mahamuni Pagoda, Mandalay Hill** where spiraling staircases lead to sweeping views of the city and its temples and the nearby **Kuthodaw Paya**, which contains the world's biggest book, the workshops of gold leaf making, tapestry making, woodcarving, marble carving and bronze casting.

Embark the ship at Gawein Jetty before lunch. Welcome cocktail in the saloon and cast off.

DAY 2

KYAUK MYAUNG

After breakfast, arrive the spectacular **potteries-making village of Kyauk Myaung** and see the manufacture stages of the famous **50 Gallons (200 liters) pots**. Sail all day. Moor overnight mid-stream.

DAY 3

TAGAUNG

Stop at **Tagaung** to explore the **ancient city** archaeological area and the fortifications around 9:00 am. Continue cruising upstream for the rest of the day. Moor overnight midstream.

DAY 4

2ND DEFILE (GORGE)

Sail all day and we enter the **dramatic 2nd defile** with its magnificent cliffs reaching down the narrow channel around early evening. After entering a few hours, enjoy the **typical view surrounded by the mountains along the river**. Sail up to Sint Khan Village and return journey to Downstream. Sail all evening until 10:00 pm. Moor overnight at midstream.

DAY 5

KATHA

After breakfast we arrive in the colonial town of **Katha**, the setting for George Orwell's book "**Burmese Days**" and also the place where in the 1942 hundreds of Irrawaddy Flotilla Company ships were scuttled before the Japanese could seize them. We explore the old streets and the market by trishaw and an **Elephant Logging Camp** located on the surrounding hardwood forest. If time permits we will also visit the **lake Indaw** to experience typical Kachin highland scenery rich in bird life.

DAY 6

MINGUN

Full day cruising downstream with stop for a walk to a river village.

In the afternoon, we arrive in **Mingun** and visit the unfinished pagoda, the largest working bell in the world and the "home for the ages".



MANAGED BY AYRAVATA CRUISE COMPANY

DAY 7

AVA - AMARAPURA

We explore **Ava** by horse-cart visiting the beautiful 200 year old teak **Bagaya Kyaung Monastery**, **Nanmyin watchtower** (27mt. high) and the **Me Nu Ok Kyaung monastery**.

In the afternoon we travel by sampan and coach to **Amarapura**, the penultimate Burmese Royal Capital (1783) to visit **U-Bein Bridge** and Silk factories. After dinner guests can enjoy a Dance and Drama performance by the Mandalay Arts School on the sundeck (if available). Moor overnight in front of Sagaing Hill.

DAY 8

MONYWA (HPOWINDAUNG AND SHWEBADAUNG CAVES)

Early morning drive by coach (approx. 2 ½ hours) to **Monywa** to visit the Hpowindaung and Shwebadaung caves where hundreds of Buddha Statues are placed inside niches decorated with wonderful mural paintings dated back to the . After lunch we visit the splendid **Sambuddhai Kat Kyaw pagoda** with its more than 500,000 Buddha images. Drive to Myin Mu jetty (approx. 1 ½ hours) where we will rejoin the ship. Dinner and overnight on board.

DAY 9

YANDABO

In the morning we arrive at **Yandabo**, a picturesque village that specializes in Pot-Making, where the peace treaty of the First Anglo-Burmese war signed on Feb. 24, 1826. We go ashore for a walk stopping at some pot-making workshops and to visit the school and the monastery.

Continue cruising downstream with an afternoon stop at **Shwe Pyi Thar village** for a walk.

Moor overnight mid river.

DAY 10

BAGAN

We arrive at **Bagan** in the early morning. Full day visit of a selection of the 2,000 listed pagodas and temples. Lunch on board and in the afternoon continue the exploration of the archeological area.

Dinner on board or in a local restaurant. Overnight on board.

DAY 11

BAGAN (DISEMBARK)

Explore some of Bagan's local markets selling wood carvings, fabrics, longyis and rattan products. Visit a workshop to see the ancient technique of lacquerware making. Alternatively guests can hire a horse cart or a bicycle and explore the site on their own or have a splendid Balloon Flight over Bagan (surcharge applied - optional). Lunch on board or in a local restaurant. Disembark and transfer to the airport for your onward flight (Yangon or Heho Inle Lake) or hotel.



MANAGED BY AYRAVATA CRUISE COMPANY

PRE AND POST CRUISE TOURS

TOUR CODE MDA_PP2.2

YANGON STOPOVER

Duration: 2 nights / 3 Days

DAY 1 BEFORE THE CRUISE

RANGOON (YANGON)

International arrival to Yangon, transfer to the Hotel. Lunch in the hotel. In the afternoon orientation tour of the city ending with the visit of the most enchanting and spectacular Pagoda of Myanmar: **the Shwedagon**. Overnight at the historic **Strand Hotel** or Chatrium Hotel.

DAY 2 BEFORE THE CRUISE

RANGOON (YANGON) – MANDALAY (BY FLIGHT)

Early morning transfer to the airport. Flight to Mandalay. Transfer to jetty.

DAY 1 AFTER THE CRUISE

BAGAN – YANGON (BY AFTERNOON FLIGHT)

Disembark. Transfer to the airport for the flight to Yangon. Check-in to **the Strand Hotel** or Chatrium Hotel.

DAY 2 AFTER THE CRUISE

YANGON - DEPARTURE

In the morning drive through **Colonial downtown** and visit the 1926-built Bogyoke Aung San market (formerly **Scott's Market**) dominated by antique, Burmese handicraft and jewellery shops, art galleries, and clothing followed by **Sule Paya**. International departures.



MANAGED BY AYRAVATA CRUISE COMPANY

UPPER IRRAWADDY

MANDALAY -UPPER IRRAWADDY (KATHA, SECOND DEFILE) – MINGUN - MANDALAY

7 Days / 6 Nights on **NEW** RV PAUKAN 2012

UPSTREAM

DAY 1

MANDALAY

Embark the ship at Mandalay jetty in the morning anytime before noon. Cast off and cruise upstream for the rest of the day.

DAY 2

KYAUK MYAUNG

After breakfast, arrive the spectacular **potteries-making village of Kyauk Myaung** and see the manufacture stages of the famous **50 Gallons (200 liters) pots**. Sail all day. Moor overnight at midstream.

DAY 3

TAGAUNG

Stop at **Tagaung** to explore the **ancient city** archaeological area and the fortifications around 9:00 am. Continue cruising upstream for the rest of the day. Moor overnight midstream.

DAY 4

2ND DEFILE (GORGE)

Sail all day and we enter the **dramatic 2nd defile** with its magnificent cliffs reaching down the narrow channel around early evening. After entering a few hours, enjoy the **typical view surrounded by the mountains along the river**. Sail up to Sint Khan Village and return journey to Downstream. Sail all evening up to 10:00 pm. Moor overnight at midstream.

DAY 5

KATHA

After breakfast we arrive in the colonial town of **Katha**, the setting for George Orwell's book "**Burmese Days**" and also the place where in the 1942 hundreds of Irrawaddy Flotilla Company ships were scuttled before the Japanese could seize them. We explore the old streets and the market by trishaw and an **Elephant Logging Camp** located on the surrounding hardwood forest. If time permits we will also visit the **lake Indaw** to experience a typical Kachin highland scenery rich in bird life.

DAY 6

MINGUN

Full day cruising downstream with stop for a walk to a river village.

In the afternoon, we arrive in **Mingun** and visit the unfinished pagoda, the largest working bell in the world and the "home for the ages". Drama performance by the Mandalay Arts School on the sundeck.

DAY 7

MANDALAY (GAWEIN JETTY) – CENTRAL MANDALAY

After breakfast, disembark and transfer to the airport for your onward flight (Yangon or Heho Inle Lake).



MANAGED BY AYRAVATA CRUISE COMPANY

PRE AND POST CRUISE TOUR

TOUR CODE UPI_PP1.2

YANGON/MANDALAY STOPOVER

Duration: 2 nights / 3 Days

DAY 1 BEFORE THE CRUISE

RANGOON (YANGON)

International arrival to Yangon, transfer to the Hotel. Lunch in the hotel. In the afternoon orientation tour of the city ending with the visit of the most enchanting and spectacular Pagoda of Myanmar: **the Shwedagon**. Overnight at the historic **Strand Hotel** or Chatrium Hotel.

DAY 2 BEFORE THE CRUISE

RANGOON (YANGON) – MANDALAY (BY FLIGHT)

Early morning transfer to the airport for the morning flight to Mandalay. Explore **Ava** by horse-cart visiting the beautiful 200 year old teak Bagaya Kyaung Monastery, Nanmyin watchtower (27mt. high) and the Me Nu Ok Kyaung monastery. We travel by sampan and coach to **Amarapura**, the penultimate Burmese Royal Capital (1783) to visit U-Bein Bridge. Embark the ship before lunchtime.

DAY 1 AFTER THE CRUISE

MANDALAY

Check in at the hotel. After lunch, visit central Mandalay: **Mahamuni Pagoda**, followed by **Mandalay Hill** where spiraling staircases lead to sweeping views of the city and its temples and the nearby **Kuthodaw Paya**, which contains the world's biggest book, the workshops of gold leaf making, tapestry making, woodcarving, marble carving and bronze casting. Overnight at Mandalay Hill resort or similar.

DAY 2 AFTER THE CRUISE

MANDALAY - YANGON - DEPARTURE

Flight to Yangon. In the morning drive through **Colonial downtown** and visit the 1926-built Bogyoke Aung San market (formerly **Scott's Market**) dominated by antique, Burmese handicraft and jewellery shops, art galleries, and clothing followed by **Sule Paya**. International departures.



MANAGED BY AYRAVATA CRUISE COMPANY

ROYAL MYANMAR

BAGAN – YANDABO - MONYWA – AVA – AMARAPURA - MANDALAY

5 Days / 4 Nights on **NEW** RV PAUKAN 2012

UPSTREAM

DAY 1

BAGAN

Our representative and guide will meet all guests upon arrival at **Bagan** airport between 07.30/08.00 am. Full day visit of a selection of the 2,000 listed pagodas and temples. Embark the ship before lunch; after continue the exploration of the archeological area. Dinner on board. Overnight on board.

DAY 2

BAGAN – RIVER VILLAGE

Explore some of Bagan's local markets selling wood carvings, fabrics, longyis and rattan products .Visit a workshop to see the ancient technique of lacquerware making. Alternatively guests can hire a horse cart or a bicycle and explore the site on their own or have a splendid Balloon Flight over Bagan (surcharge applied - optional). Back to the ship around Noon and cast off. We cruise upstream all day. Stop at **Shwe Pyi Thar village** for a walk. Dinner followed by a **Puppet Show performance** in the village or sundeck.

DAY 3

YANDABO

In the morning we arrive at **Yandabo**, a picturesque village that specializes in Pot-Making, where the peace treaty of the First Anglo-Burmese war signed on Feb. 24, 1826. We go ashore for a walk stopping at some pot-making workshops and to visit the school and the monastery. We cruise upstream the rest of the day, moor overnight at Myin Mu jetty.

DAY 4

MONYWA (HPOWINDAUNG AND SHWEBADAUNG CAVES)

Early morning drive by coach (approx. 1 ½ hours) to **Monywa** to visit the Hpowindaung and Shwebadaung caves where hundreds of Buddha Statues are placed inside niches decorated with wonderful mural paintings dated back to the . After lunch we visit the splendid **Sambuddhai Kat Kyaw pagoda** with its more than 500,000 Buddha images. Drive to Sagaing (2 hours) where we will rejoin the ship. Dinner and overnight on board

DAY 5

AVA (DISEMBARK) – AMARAPURA

After breakfast, disembark at Ava Jetty. We explore **Ava** by horse-cart visiting the beautiful 200 year old teak **Bagaya Kyaung Monastery**, **Nanmyin watchtower** (27mt. high) and the **Me Nu Ok Kyaung monastery**. We travel by sampan and coach to **Amarapura**, the penultimate Burmese Royal Capital (1783) to visit **U-Bein Bridge**. Lunch in a local restaurant, then transfer to the Hotel or airport for your onward flight (Yangon or Heho Inle Lake)



MANAGED BY AYRAVATA CRUISE COMPANY

PRE AND POST UPSTREAM CRUISE TOUR

TOUR CODE RMU_PP1.2

YANGON/MANDALAY STOPOVER

Duration: 3 nights / 4 Days

DAY 1 BEFORE THE CRUISE

RANGOON (YANGON)

International arrival to Yangon, transfer to the Hotel. Lunch in the hotel. In the afternoon orientation tour of the city ending with the visit of the most enchanting and spectacular Pagoda of Myanmar: **the Shwedagon**. Overnight at the historic **Strand Hotel** or Chatrium Hotel.

DAY 2 BEFORE THE CRUISE

RANGOON (YANGON) – BAGAN (BY FLIGHT)

Early morning transfer to the airport. Flight to Bagan. Transfer to jetty.

DAY 1 AFTER THE CRUISE

MANDALAY

Check in at the hotel. After lunch, visit central Mandalay: **Mahamuni Pagoda**, followed by **Mandalay Hill** where spiraling staircases lead to sweeping views of the city and its temples and the nearby **Kuthodaw Paya**, which contains the world's biggest book, the workshops of gold leaf making, tapestry making, woodcarving, marble carving and bronze casting. Overnight at Mandalay Hill resort or similar.

DAY 2 AFTER THE CRUISE

MINGUN - YANGON

In the morning we travel by country boat to **Mingun** and visit the unfinished pagoda, the largest working bell in the world and the "home for the ages". Transfer to the airport for your onward flight. Check-in to **the Strand Hotel** or Chatrium Hotel.

DAY 3 AFTER THE CRUISE

YANGON - DEPARTURE

In the morning drive through **Colonial downtown** and visit the 1926-built Bogyoke Aung San market (formerly **Scott's Market**) dominated by antique, Burmese handicraft and jewellery shops, art galleries, and clothing followed by **Sule Paya**. International departures.



MANAGED BY AYRAVATA CRUISE COMPANY

DOWNSTREAM

DAY 1

MANDALAY (AVA – AMARAPURA)

Our representative and guide will meet all guests upon arrival at Mandalay airport between 07:30/08:00 am. We explore **Ava** by horse-cart visiting the beautiful 200 year old teak **Bagaya Kyaung Monastery**, **Nanmyin watchtower** (27mt. high) and the **Me Nu Ok Kyaung monastery**. In the afternoon we travel by sampan and coach to **Amarapura**, the penultimate Burmese Royal Capital (1783) to visit **U-Bein Bridge** and Silk factories. After dinner guests can enjoy a **Dance and Drama performance** by the Mandalay Arts School on the sundeck (if available). Moor overnight in front of Sagaing Hill.

DAY 2

MONYWA (HPOWINDAUNG AND SHWEBADAUNG CAVES)

Early morning drive by coach (approx. 2 hours) to **Monywa** to visit the Hpowindaung and Shwebadaung caves where hundreds of Buddha Statues are placed inside niches decorated with wonderful mural paintings dated back to the . After lunch we visit the splendid **Sambuddhai Kat Kyaw pagoda** with its more than 500,000 Buddha images. Drive to Myin Mu jetty (approx. 1 ½ hours) where we will rejoin the ship. Dinner and overnight on board.

DAY 3

YANDABO

In the morning we arrive at **Yandabo**, a picturesque village that specializes in Pot-Making, where the peace treaty of the First Anglo-Burmese war signed on Feb. 24, 1826. We go ashore for a walk stopping at some pot-making workshops and to visit the school and the monastery. Continue cruising downstream with an afternoon stop at **Shwe Pyi Thar village** for a walk. Moor overnight mid river.

DAY 4

BAGAN

We arrive at **Bagan** in the early morning. Full day visit of a selection of the 2,000 listed pagodas and temples. Lunch on board and in the afternoon continue the exploration of the archeological area. Dinner on board or in a local restaurant. Overnight on board.

DAY 5

BAGAN (DISEMBARK)

Explore some of Bagan's local markets selling wood carvings, fabrics, longyis and rattan products. Visit a workshop to see the ancient technique of lacquerware making. Alternatively guests can hire a horse cart or a bicycle and explore the site on their own or have a splendid Balloon Flight over Bagan (surcharge applied - optional). Lunch on board or in a local restaurant. Disembark and transfer to the airport for your onward flight (Yangon or Heho Inle Lake) or hotel.



MANAGED BY AYRAVATA CRUISE COMPANY

PRE AND POST DOWNSTREAM CRUISE TOUR

TOUR CODE RMD_PP1.2

YANGON STOPOVER

Duration: 3 nights / 4 Days

DAY 1 BEFORE THE CRUISE

RANGOON (YANGON)

International arrival to Yangon, transfer to the Hotel. Lunch in the hotel. In the afternoon orientation tour of the city ending with the visit of the most enchanting and spectacular Pagoda of Myanmar: **the Shwedagon**. Overnight at the historic **Strand Hotel** or Chatrium Hotel.

DAY 2 BEFORE THE CRUISE

RANGOON (YANGON) – MANDALAY (BY FLIGHT)

Early morning transfer to the airport for the flight to Mandalay. Visit **Mahamuni Pagoda**, followed by **Mandalay Hill** where spiraling staircases lead to sweeping views of the city and its temples and the nearby **Kuthodaw Paya**, which contains the world's biggest book, the workshops of gold leaf making, tapestry making, woodcarving, marble carving and bronze casting. Lunch in the hotel. In the afternoon we travel by country boat to **Mingun** and visit the unfinished pagoda, the largest working bell in the world and the "home for the ages". Overnight at Mandalay Hill Resort or similar.

DAY 3 BEFORE THE CRUISE

AVA (EMBARK)

Transfer to Ava Jetty to embark the ship.

DAY 1 AFTER THE CRUISE

BAGAN – YANGON (BY FLIGHT)

Flight to Yangon. Check-in to **the Strand Hotel** or Chatrium Hotel.

DAY 2 AFTER THE CRUISE

YANGON - DEPARTURE

In the morning drive through **Colonial downtown** and visit the 1926-built Bogyoke Aung San market (formerly **Scott's Market**) dominated by antique, Burmese handicraft and jewellery shops, art galleries, and clothing followed by **Sule Paya**. International departures.



MANAGED BY AYRAVATA CRUISE COMPANY

RETAIL RATES

Per person in US\$ valid OCTOBER 2012 TO MARCH 2013

MYANMAR DAYS (New)

10 Nights Cruise

Main Deck	Twin US\$4,800	Twin Single use US\$6,300	
Upper Deck	Twin US\$5,000	Twin Single use: US\$6,500	Single (*) US\$5,000
Premier Bow	Twin US\$7,140	Premier Bow Twin single use: US\$14,280	

(*) Paukan2012 only

Pre/Post Cruise Packages (MDA PP 1.2 – MDA PP 2.2)

STRAND HOTEL			
Twin/Double Deluxe Suite US\$ 1,380		Twin/Double Deluxe Suite Single use US\$ 1,770	
CHATRIUM HOTEL			
Twin/Double Superior US\$ 735		Twin/Double Superior Single use US\$ 855	

THE UPPER IRRAWADDY

6 Nights Cruise

Main Deck	Twin US\$2,880	Twin Single use US\$3,780	
Upper Deck	Twin US\$3,000	Twin Single use: US\$3,900	Single (*) US\$3,000
Premier Bow	Twin US\$4,285	Premier Bow Twin single use: US\$8,570	

(*) Paukan2012 only

Pre/Post Cruise Packages (UPI PP1.2)

STRAND HOTEL			
Twin/Double Deluxe Suite US\$ 1,430		Twin/Double Deluxe Suite Single use US\$ 1,705	
CHATRIUM HOTEL			
Twin/Double Superior US\$ 935		Twin/Double Superior Single use US\$ 1,070	

ROYAL MYANMAR

4 Nights cruise

Main Deck	Twin US\$1,920	Twin Single use US\$2,520	
Upper Deck	Twin US\$2,000	Twin Single use: US\$2,600	Single (*) US\$2,000
Premier Bow	Twin US\$2,860	Premier Bow Twin single use: US\$5,720	

(*) Paukan2012 only

Pre/post cruise Package (RMU PP1.2 - RMD PP1.2)

STRAND HOTEL			
Twin/Double Deluxe Suite US\$ 1,660		Twin/Double Deluxe Suite Single use US\$ 2,130	
CHATRIUM HOTEL			
Twin/Double Superior US\$ 1,020		Twin/Double Superior Single use US\$ 1,215	

CRUISE PRICE INCLUDES

All meals &, Coffee/Tea/Water - Sightseeing as described in the Itinerary – Ayravata Cruises English Speaking Guide (additional non-English speaking guide is provided if more than 8 cabins are booked by parties speaking the same language) - All Entrance Fees



MANAGED BY AYRAVATA CRUISE COMPANY

CRUISE PRICE EXCLUDES

Drinks, laundry, all items of a personal nature; health-accident-baggage or travel protection plan outside the ship's boundaries, fuel surcharges if applicable, domestic flights.

(*) Within the above rates the fuel cost is calculated on the Myanmar Market average price of the months of April 2011 (i.e. USD 4 per imperial gallon). Should the fuel price rise by more than 10%, AYRAVATA CRUISES will be entitled to impose a fuel surcharge equivalent to the amount by which the fuel price exceeds the price allowed for in the above rates, provided that the notice of this rise is given to the Passenger and/or his-her Agent within 30 days prior the cruise departure date.

Pre-Post Cruise Package Price includes Hotels accommodation – Meals Sightseeing as described in the Itinerary –English Speaking Guide (other languages with supplement) - All Entrance Fees – Transfers – Flights as mentioned in the program

Pre-Post Cruise Package Price excludes Drinks, laundry, all items of a personal nature; travel insurance, Compulsory meals and other supplements during holiday / festive season.

IMPORTANT NOTICE

For All departures should the occupancy be less than 12 PASSENGERS the Company reserves the right to cancel the cruise up to 60 days prior the departure date. A written confirmation notice will be released to all booked clients and/or their agents within and not later than 60 days prior the departure date. In case of cancellation an alternative cruise will be offered and if not acceptable all down payments will be refunded.



MANAGED BY AYRAVATA CRUISE COMPANY

SHORT DISCOVERY CRUISES

BETWEEN MANDALAY AND BAGAN

OPERATED BY PAUKAN2007

These cruises have been designed to be a relaxing interlude during a tour of Myanmar. You will experience the river life and visit villages off of the usual tourist trails adding to your trip an unforgettable experience.

TWO NIGHT CRUISES

FROM ROYAL MANDALAY (MINGUN & SAGAING) TO ANCIENT BAGAN

(DOWNSTREAM: MANDALAY – MINGUN – SAGAING – RIVER VILLAGE - BAGAN)

Departure: Sunday

BETWEEN ANCIENT BAGAN AND ROYAL MANDALAY

(UPSTREAM: BAGAN TO MANDALAY)

Departure: Tuesday & Friday

ONE NIGHT CRUISE

BETWEEN ROYAL MANDALAY AND ANCIENT BAGAN

(DOWNSTREAM: MANDALAY TO BAGAN)

Departure: Thursday

TOUR OF MYANMAR WITH A SHORT CRUISE

WE OFFER A WIDE CHOICE OF TOURS OF MYANMAR INCLUDING A 1-2NIGHT SHORT CRUISE – CHECK OUR WEBSITE

WWW.AYRAVATACRUISES.COM OR CONTACT US TO RECEIVE A SOFT COPY VIA E-MAIL.



MANAGED BY AYRAVATA CRUISE COMPANY

FROM ROYAL MANDALAY (MINGUN & SAGAING) TO ANCIENT BAGAN

MANDALAY – MINGUN – SAGAING – RIVER VILLAGE – BAGAN

Departure: Sunday * Duration: 2 nights

DAY 1 (SUNDAY)

MANDALAY (GAWEIN) – MINGUN

The embarkation time is 12.00 noon at **Gawein jetty** and cast off after half an hour time.

Welcome Cocktail and briefing in the Saloon or Sundeck followed by Lunch.

After cruising upstream for two hours we arrive at the **Mingun** Pagoda Complex. Our English speaking manager (or your private guide) will accompany the guests during the visit.

Moor Overnight at a sandbank mid-stream. After dinner guests can enjoy a Dance and Drama performance by the Mandalay Arts School on the sundeck (if available).

DAY 2 (MONDAY)

MINGUN – SAGAING – YANDABO

Early in the morning cruise downstream. During the two hours journey the passengers can admire the natural beauty of the river and the life of its banks while relaxing on the sundeck or just sitting outside their own cabin. Enjoy the sunrise over Sagaing Hill.

After breakfast passengers wishing to visit **Sagaing** can go ashore with the assistance of our Ship Manager or their own guide.

We resume our downriver voyage at 10.30 hrs and we will sail all day long.

In the late afternoon we stop at **Yandabo**, a village specializing in Pot-Making, where the peace treaty of the First Anglo-Burmese war was signed on Feb. 24, 1826. We visit the Pot workshops, the monastery and the school.

Moor overnight near the village of Shwe Nann Tint.

DAY 3 (TUESDAY)

BAGAN

Cast off early in the morning for the last leg of our journey

Enjoy the sunrise near **Bagan**. Passengers will disembark at Aye Yar jetty around 9:30 hrs.



MANAGED BY AYRAVATA CRUISE COMPANY

BETWEEN ANCIENT BAGAN AND ROYAL MANDALAY

(UPSTREAM: BAGAN TO MANDALAY)

Departure: Tuesday & Friday * Duration: 2 Nights

DAY 1 (TUESDAY / FRIDAY)

BAGAN – CRUISING TO MANDALAY (RIVER VILLAGE STOP)

The embarkation time is 11.30 hrs at **Bagan** Aye Yar jetty and cast off after half an hour.

Welcome Cocktail and briefing in the Saloon or Sundeck followed by Lunch.

In the late afternoon stop in a typical **river village**.

DAY 2 (WEDNESDAY / SATURDAY)

CRUISING TO MANDALAY (VISIT YANDABO VILLAGE)

Cruise all day with stop enroute in the morning to visit **Yandabo**, a typical river village specializing in Pot-Making, where the peace treaty of the First Anglo-Burmese war was signed on Feb. 24, 1826. We visit the Pot workshops, the monastery and the school.

Moor overnight nearby a village (Ywar Thit Gyi or Pauk Myaing Pauk Taw) few miles away from Ava Bridge.

DAY 3 (THURSDAY / SUNDAY)

*MANDALAY (SAGAING *THU* – GAWEIN *SUN*)*

Enjoy the sunrise. After an early breakfast, the passengers will disembark at **Sagaing** Jetty (Thursday only) or Gawein jetty (Sunday Only) at around 09.30 hrs.

BETWEEN ROYAL MANDALAY AND ANCIENT BAGAN

(DOWNSTREAM: MANDALAY TO BAGAN)

Departure: Thursday * Duration: 1 night

DAY 1 (THURSDAY)

MANDALAY (SAGAING) – YANDABO

The embarkation time is 10.00 hrs at **SAGAING** jetty and cast off after half an hour.

Welcome Cocktail and briefing in the Saloon or Sundeck followed by Lunch.

Cruise all day long. In the late afternoon we stop at **Yandabo**, a village specializing in Pot-Making, where the peace treaty of the First Anglo-Burmese war was signed on Feb. 24, 1826. We visit the Pot workshops, the monastery and the school.

Moor overnight near the village of Shwe Nann Tint.

DAY 2 (FRIDAY)

BAGAN

Early in the morning we continue downstream to **Bagan**. After breakfast (if time permits) we visit another typical river village.

Enjoy the sunrise near Bagan. Passengers will disembark at Bagan Aye Yar jetty by 9:30 hrs.



MANAGED BY AYRAVATA CRUISE COMPANY

RETAIL RATES

PER PERSON IN US\$ VALID FROM 01 JULY 2012 TO 02 MAY 2013

HIGH SEASON (14 OCT 12–05 APR 13)

Between Royal Mandalay and Ancient Bagan * (1N Downstream / Dep. Thu)

Main Deck	Twin Cabin US\$390	Twin Cabin Single use US\$580
Upper Deck	Twin/DbI Cabin US\$470	Twin/DbI Cabin Single use: US\$705
	Suite Bow: US\$875	Suite Bow single use: US\$1,750
Lower Deck	Single: US\$340	

From Royal Mandalay (Mingun & Sagaing) to Ancient Bagan * (2N Downstream / Dep. Sun)

Between Ancient Bagan and Royal Mandalay * (2N Upstream / Dep. Tue, Fri)

Main Deck	Twin Cabin US\$780	Twin Cabin Single use US\$1,160
Upper Deck	Twin/DbI Cabin US\$940	Twin/DbI Cabin Single use: US\$1,410
	Suite Bow: US\$1,750	Suite Bow single use: US\$3,500
Lower Deck	Single: US\$680	

NEW YEAR'S EVE 2N CRUISE (30 DECEMBER 2012) SUPPLEMENT: US\$ 110 PER PAX

SHOULDER SEASON (06 APR 13 - 02 MAY 13) & (01 JULY 12 - 26 AUGUST 12)

Between Royal Mandalay and Ancient Bagan * (1N Downstream / Dep. Thu)

Main Deck	Twin Cabin US\$350	Twin Cabin Single use US\$525
Upper Deck	Twin/DbI Cabin US\$425	Twin/DbI Cabin single use: US\$630
	Suite Bow: US\$790	Suite Bow single use: US\$1,580
Lower Deck	Single: US\$275	

From Royal Mandalay (Mingun & Sagaing) to Ancient Bagan * (2N Downstream / Dep. Sun)

Between Ancient Bagan and Royal Mandalay * (2N Upstream / Dep. Tue, Fri)

Main Deck	Twin Cabin US\$700	Twin Cabin Single use US\$1,050
Upper Deck	Twin/DbI Cabin US\$850	Twin/DbI Cabin single use: US\$1,260
	Suite Bow: US\$1,580	Suite Bow single use: US\$3,160
Lower Deck	Single: US\$550	

CRUISE RATE INCLUDES

All Cruises: Full Board, Sightseeing in a river village, Coffee / Tea / Water

Sunday Dep. 2 Nights Cruise Shore Excursions: Vehicle in Sagaing + Entrance fees for Mingun / Sagaing + Dance and Drama show on the sundeck.

CRUISE RATE EXCLUDES

Transfer to the ship from Mandalay / Bagan Airport or Hotel, drinks, laundry, all items of a personal nature; Insurance outside the ship boundaries, fuel surcharges if applicable.

IMPORTANT NOTE: For All the departures should the occupancy be less than 10 PASSENGERS the Company reserves the right to cancel the cruise up to 30 days prior the departure date. A written confirmation notice will be released to all booked clients and/or their agents within and not later than 30 days prior the departure date. In case of cancellation an alternative cruise will be offered and if not acceptable all down payments will be re-funded.



MANAGED BY AYRAVATA CRUISE COMPANY

EXPEDITION CRUISES

CHINDWIN RIVER CRUISE

A River Journey to discover the hidden treasures of the Golden Land

Chindwin is a river less travelled, and apart from its religious monuments it offers spectacular sceneries as It meanders through beautiful valleys and jungles, lofty blue mountains rising in the distance or towering over towns and villages on the banks.

The cruise begins from Bagan and we will sail the Chindwin up to the Teak town of Mawlaik our turnaround point. We disembark in Monywa from where we will drive to Mandalay.

We visit remote villages and towns with beautiful and whimsical pagodas and monastery probably the most preserved of Myanmar; the ancient cave pagodas of Hpowintaung and Shwebataung with hundreds of Buddha images and paintings; the Sambuddhay Pagoda of Monywa, a complex of buildings covered with nearly 600,000 Buddha images.

GRAND VOYAGE OF THE CHINDWIN RIVER

BAGAN – PAKKOKU - PAKHAN-GYI - MONYWA – MINGIT - KALEWA – MAWLAYIK – MANDALAY

(10 Days / 09 Nights) – operated with PANDAW 1947 or **NEW** PAUKAN 2012

DAY 1

BAGAN – PAKKOKU

Board the ship at 09.00 hrs. We cast off at 09.30 hrs and sail upstream to the Irrawaddy and Chindwin confluence. If time permits we stop in Thein Gone, a typical river village where we visit the school and the monastery. Continue cruising north to the bustling town of **Pakkoku** where we visit the monastery, cheroots and weaving workshops. We pass the Chindwin and Irrawaddy river confluence and we stop for the night.

DAY 2

PAKKOKU - PAKHAN-GYI - AHMYINT VILLAGE – MONYWA

Visit the little town of **Pakhan-gyi**. This post-Pagan period provincial capital was walled with a moat and originally had a **governor's palace**. We see the old walls; visit the museum and a spectacular 19th century wood carved monastery.

Continue cruising to **Ahmyint village** and visit the local market, see beautiful houses and the lovely 17th century style **Min Kyaw Swa stupas** with 18th century style paintings.

Arrive at **Monywa**, the Chindwin River largest port, in the early evening.

DAY 3

MONYWA (HPOWINDAUNG AND SHWEBADAUNG CAVES)

Visit **Hpowindaung** and **Shwebadaung caves** where hundreds of Buddha Statues are placed inside niches decorated with wonderful mural paintings. If the weather and time permits we will also visit Twin Daung Lake better known as lake of “Spirulina”, the famous green-blue algae rich in protein, vitamins and minerals. The origin of the lake is unknown, some geologist claim to be an extinct volcano crater, others a crater formed by a meteorite.



MANAGED BY AYRAVATA CRUISE COMPANY

Alternatively we drive to **Kyaukka village** to visit a “plain” lacquer ware type workshop. Known as “Kyauk Kar” this kind of lacquerware has only two colors, black and red made by natural pigments. Late lunch and cast off.

DAY 4

KANI

Late morning explore the village of **Kanee** and climb the pagoda hillock for its view. Continue sailing upstream until late at night to reach the village of Kani.

DAY 5

KIN – MINGIN

Early morning we explore **Kin village** with its beautiful wooden houses and the woodcarvings monastery. Continue sailing upstream to the small enchanting town of **Mingin**. Explore its temples and 1900’s wooden houses and the Min Kyaung Monastery with old Buddha Images.

DAY 6

KYIDAW

At **Kyidaw** (Kyi Taung Oo) we visit Shwe Za War Yaw monastery one of the oldest and best preserved wood carved monastery of Myanmar, embellished with wooden sculpted idols with fascinating gold leaf wall decorations. We walk through a beautiful scenario of paddy fields to the village of **Kan** where we visit another splendid example of Myanmar old monastery. Afterwards we return to the ship by local boat.

Proceed upstream up to Kyaw Zin, a village very close to Kalewa, where we stop for the night.

DAY 7

KALEWA

In the morning we explore **Kalewa**, the main river port for the trading with India, the lively market and climb up to **Shwe Moat Htaw stupa** for the beautiful view.

Back to the ship before lunch and keep on cruising upstream to Mawlaik.

DAY 8

MAWLAIK – SAILING BACK DOWNSTREAM

Mawlaik (situated 35 km from the Indian Border) was the administrative capital of this area rich of Teak forests. It is a pleasant colonial town with its golf course surrounded by splendid colonial houses built by the Bombay Burmah Trading Corporation in the 1920’s and 1930’s (there is still a small community of Indians that used to work for the Scottish company and their descendents). The governor’s house, the administrative building, the school, the hospital, the “Dak Bungalows”, company headquarter are well preserved, still in use nowadays and nicely maintained.

Being this our turnaround point, we begin sailing back downstream to Monywa.

DAY 9

SAILING DOWNSTREAM FOR 100 MILES

Continue sailing all day downstream. Stop at **Kyauk Hlay Gar village**, famous for its Petrified Wood, where we visit the school and the typical houses.

DAY 10

MONYWA - MANDALAY



MANAGED BY AYRAVATA CRUISE COMPANY

Arrive at Monywa in the morning. Transfer by coach to **Mandalay** with stop enroute to visit the splendid **Sambuddhai Kat Kyaw pagoda** where more than 500,000 Buddha statues are placed and the **Aung Sakyar Stupa** with the longest reclining Buddha of Myanmar (333 ft/100 m). Lunch at a restaurant in Sagaing. Continue to your Mandalay Hotel or Airport.

PRE AND POST CRUISE TOURS

TOUR CODE GVD_PP1.3

YANGON / BAGAN STOPOVER

Duration: 3 nights / 4 Days

DAY 1 BEFORE THE CRUISE

RANGOON (YANGON)

International arrival to Yangon, transfer to the Hotel. Lunch in the hotel. In the afternoon orientation tour of the city ending with the visit of the most enchanting and spectacular Pagoda of Myanmar: **the Shwedagon**. Overnight at the historic Strand or Chatrium Hotel.

DAY 2 BEFORE THE CRUISE

RANGOON (YANGON) – BAGAN (BY FLIGHT)

Early morning transfer to the airport. Flight to **Bagan**, one of the Asia's most important archaeological sites and one out of two most eminent religious old cities in South East Asia. The sightseeing starts with a visit to Nyaung Oo market – a typical local market; followed by visits to most distinctive pagodas such as Shwezigon Pagoda – the holiest one believed to be enshrined with Buddha tooth and hair; Gubyaukgyi Temple (Wetkyiinn village) – the 13th century 'cave temple' with fine frescoes of scenes from Jakkatas; Anada Temple – one of the masterpieces surviving and remaining in Bagan and considered to be in the Mon architecture style. Afternoon, we will visit a lacquer ware factory followed by a visit to local village. We will view the sunset from the top of one of the temples.

DAY 3 BEFORE THE CRUISE

BAGAN (EMBARC THE SHIP)

Transfer to the Jetty.

DAY 1 AFTER THE CRUISE

MANDALAY – YANGON (BY AFTERNOON FLIGHT)

Flight to Yangon (or Heho for the Inle Extension tour). Check-in to the Strand Hotel or Chatrium Hotel.

DAY 2 AFTER THE CRUISE

YANGON - DEPARTURE

Visit **Sule Paya** and **Colonial downtown**. International departures.



MANAGED BY AYRAVATA CRUISE COMPANY

TOUR CODE GVD_PP2.4

YANGON / BAGAN / MANDALAY STOPOVER

Duration: 4 nights / 5 Days

DAY 1 BEFORE THE CRUISE*RANGOON (YANGON)*

International arrival to Yangon, transfer to the Hotel. Lunch in the hotel. In the afternoon orientation tour of the city ending with the visit of the most enchanting and spectacular Pagoda of Myanmar: **the Shwedagon**. Overnight at the historic Strand Hotel or Chatrium Hotel.

DAY 2 BEFORE THE CRUISE*RANGOON (YANGON) – BAGAN (BY FLIGHT)*

Early morning transfer to the airport. Flight to **Bagan**, one of the Asia's most important archaeological sites and one out of two most eminent religious old cities in South East Asia. The sightseeing starts with a visit to Nyaung Oo market – a typical local market; followed by visits to most distinctive pagodas such as Shwezigon Pagoda – the holiest one believed to be enshrined with Buddha tooth and hair; Gubyaukgyi Temple (Wetkyiinn village) – the 13th century 'cave temple' with fine frescoes of scenes from Jakatas; Anada Temple – one of the masterpieces surviving and remaining in Bagan and considered to be in the Mon architecture style. Afternoon, we will visit a lacquer ware factory followed by a visit to local village. We will view the sunset from the top of one of the temples. Overnight at Tharabar or Thiripitsaya Hotel.

DAY 3 BEFORE THE CRUISE*BAGAN (EMBARK THE SHIP)*

Transfer to the Jetty.

DAY 1 AFTER THE CRUISE*MANDALAY*

Arrive Mandalay after lunch. Check-in to the Hotel. Late Afternoon visit **Kuthodaw Pagoda**, renowned as the world's largest book; and **Mandalay Hill**, regarded a natural watch tower in the plain region of Mandalay, to view the sunset. Overnight at Mandalay Hill Hotel.

DAY 2 AFTER THE CRUISE*MANDALAY - YANGON*

Excursion to Ancient Capital **Amarapura**, 11 Kilometers south of Mandalay visiting Mahagandayon monastery; 1.2 kilometer long U Bein Wooden Bridge and silk-weaving factory. Lunch at the hotel. Check out. Afternoon visit **Maha Muni Buddha Image** and (if time permits) continue to Shwe Kyaung monastery before driving to the airport for the flight to Yangon. Check-in to **the Strand Hotel** or Chatrium Hotel.

DAY 3 AFTER THE CRUISE*YANGON - DEPARTURE*Visit **Sule Paya** and **Colonial downtown**. International departures.

MANAGED BY AYRAVATA CRUISE COMPANY

RETAIL RATES

Per person in US\$ valid JULY, AUGUST, SEPTEMBER 2012

VOYAGE OF CHINDWIN RIVER

9 Nights Cruise

Main Deck	Twin US\$4,300	Twin Single use US\$5,650	
Upper Deck	Twin US\$4,500	Twin Single use US\$5,850	Single (*) US\$4,500
Premier Bow	Twin US\$6,430	Premier Bow Twin single use US\$12,860	

(*) Paukan2012 only

Pre/Post Cruise Packages

Tour Code GVD_PP1.3 / 3 nights

STRAND HOTEL

Twin/Double Deluxe Suite US\$ 1,510

Twin/Double Deluxe Suite Single use US\$ 1,965

CHATRIUM HOTEL

Twin/Double Superior US\$ 870

Twin/Double Superior Single use US\$ 1,055

Tour Code GVD_PP2.4 / 4 nights

STRAND HOTEL

Twin/Double Deluxe Suite US\$ 1,840

Twin/Double Deluxe Suite Single use US\$ 2,370

CHATRIUM HOTEL

Twin/Double Superior US\$ 1,160

Twin/Double Superior Single use US\$ 1,420

CRUISE PRICE INCLUDES

All meals &, Coffee/Tea/Water - Sightseeing as described in the Itinerary – Ayravata Cruises English Speaking Guide (additional non-English speaking guide is provided if more than 8 cabins are booked by parties speaking the same language) - All Entrance Fees.

CRUISE PRICE EXCLUDES

Transfer from/to Mandalay or Bagan Hote-Airport. Drinks, laundry, all items of a personal nature; health-accident-baggage or travel protection plan outside the ship's boundaries, fuel surcharges if applicable, domestic flights.

(*) Within the above rates the fuel cost is calculated on the Myanmar Market average price of the months of April 2011 (i.e. USD 4 per imperial gallon). Should the fuel price rise by more than 10%, AYRAVATA CRUISES will be entitled to impose a fuel surcharge equivalent to the amount by which the fuel price exceeds the price allowed for in the above rates, provided that the notice of this rise is given to the Passenger and/or his-her Agent within 30 days prior the cruise departure date.

Pre-Post Cruise Package Price includes Hotels accommodation –Sightseeing as described in the Itinerary – English Speaking Guide (other languages with supplement) - All Entrance Fees – Transfers – Flights as mentioned in the program

Pre-Post Cruise Package Price excludes Drinks, laundry, all items of a personal nature; travel insurance, Compulsory meals and other supplements during holiday / festive season.

IMPORTANT NOTE: For All departures should the occupancy be less than 12 PASSENGERS the Company reserves the right to cancel the cruise up to 60 days prior the departure date. A written confirmation notice will be released to all booked clients and/or their agents within and not later than 60 days prior the departure date.



MANAGED BY AYRAVATA CRUISE COMPANY

INLE LAKE EXTENSION PACKAGE (1N/2D)

DAY 1

HEHO - INLE LAKE

Transfer from the Heho airport to the hotel by the lake shore.

Inle Lake, located 900 meters above sea level surrounded by beautiful mountains of the Shan plateau, is the home land of the Inthar tribe famous not only for their unique leg-rowing style and fishing method but also for the floating gardens used as vegetable plantations. If by chance today coincides with the market day, we will visit the regional market which is held on a 5 days rotation basis in different areas of the Lake. We will visit **Phaungdawoo Pagoda** – famous for its richly gilded five small Buddha images; **Ngaphechaung monastery** (also known as jumping cat monastery) was built more than one and a half century ago and features a number of interesting old Buddha Images; silk and cotton weaving cottages and black smith.

DAY 2

INDEIN – HEHO

We explore the southern part of the Lake by boat sailing through small twisting and turning creeks to reach **Indein village**. This small village located on the southwestern bank of the lake is famous for its ruined clusters of pagodas dated back to 16th century. The tranquil peaceful ambience and the ruins overgrown with bushes will bring you centuries back. After lunch you will be transferred to the airport for your onward flight.

PACKAGE PRICE

2D/ 1N AT LAKE VIEW HOTEL

Twin/Double Deluxe US\$ 695

Twin/Double Deluxe Single use US\$ 925

Price includes

1 night accommodation at the Lake View Hotel – Meals and Sightseeing as described in the Itinerary – English Speaking Guide (other languages with supplement) - All Entrance Fees – Land Transfers – Flight Mandalay or Bagan / Heho

Price excludes

Drinks, laundry, all items of a personal nature; Insurance, compulsory meals and other supplements during holiday / festive season.



MANAGED BY AYRAVATA CRUISE COMPANY

PARTNER HOTELS

YANGON

THE STRAND

Doubtless, by reason of its proximity to the passenger wharves, the Strand Hotel is the best-known hotel in Rangoon. Specially built to the plans of the proprietors, Messrs. Sarkies Bros., it was opened in 1901. The lighting throughout is by electricity, the current for this and for the fans being generated on the premises. The water supply is drawn from an artesian well, and the cuisine is under the direction of a French chef. The proprietors first started business in Rangoon in 1892 by acquiring the British Burma Hotel, which stood on the site now occupied by the Burma Club in Merchant Street. Four years later they disposed of the property, which at that time was known as Sarkies Hotel, and in 1897 opened the Bodega Restaurant at the corner of Merchant Street and Phayre Street. Another four years saw Messrs. Sarkies Bros. in the Strand Hotel. The same proprietors also own Raffles Hotel at Singapore. The Crag Hotel and the Eastern and Oriental Hotels at Penang and the Majestic Hotel, which is now in course of erection in Calcutta. (A. WRIGHT, 1910)

STRAND HOTEL



THIS Premier Hotel of Burma is the most modern in Rangoon. It commands the best position in the City, faces the river, is in close proximity to all the Banks, the Post and Telegraph Offices, Shops, Shipping Offices, etc. The apartments of the Hotel consist of Sitting rooms, Bed and Dressing rooms with Bath room attached. For comfort and convenience the Tourists and Commercial Travellers cannot find anywhere else, but in the Strand Hotel. Under the able management of Mr. Joe Constantine, who was connected with Raffles Hotel, Singapore, for many years, the Strand Hotel has gained popularity amongst the travelling public.

SARKIES BROTHERS,
Proprietors.

Reopened in the 1993 after extensive renovations the hotel's 32 beautifully appointed suites are the essence of timeless elegance. For a really grand experience, there's the spacious Strand Suite with its own verandah overlooking the river. For more details: www.ghmhotels.com



CHATRIUM

This hotel-resort is located along the western shore of Royal Lake (Kandawgyi Lake) facing the magnificent Shwe Dagon Pagoda. The building was designed in a typical contemporary Asian style with Oriental and Colonial architectonic details on a total land area of almost 4 acres. The all glass window panels of the lobby and restaurants allow the sunlight to create a natural ambience. The traditional décor and the gallery-like atmosphere of the lobby area assure an experience true to the spirit of traditional Asia. Opened in the 1998 it has 303 guestrooms including 37 luxurious suites featuring a wood-accented décor employing traditional fabrics, tapestries and furniture of Myanmar. Curiosity: the land where it was built was once owned by the renowned family of Tiger Balm in 1900's and later the prosperous land spot was called "Tiger Hill". www.chatriumhotelyangon.com



MANAGED BY AYRAVATA CRUISE COMPANY

MANDALAY

HILL RESORT

Mandalay Hill Resort Hotel lies at the foot of Mandalay Hill with a panoramic view of a myriad of pagodas. It also faces the distinctive architecture of the Royal Palace and its beautiful moat. The Resort is situated within easy reach of many ancient monuments and historical sites. The hotel has 206 rooms in total. <http://www.mandalayhillresorthotel.com>

BAGAN

THIRIPYITSAYA SAKURA SANCTUARY RESORT

Beautifully located on the banks of the mighty Irrawaddy River in the historical Old Bagan and Adjacent to the archaeological museum, 10 minutes drive from the airport, the hotel was the first international hotel in Bagan and probably the one with the best setting.

The 76 rooms (each offers a spacious, private veranda) are divided into 17 low-slung villas scattered through the big English-style garden. Ayravata Cruises clients will be booked only in the 28 Deluxe Garden or the 9 River view rooms (26sqm).

We recommend also the 4 River Front Suites or the 4 River View Suites (78 sqm) located in a two storey building either in the ground floor (River front) or upper (River view) floor with a splendid view of the Irrawaddy River.

Facilities: Myanmar, Thai and Western style dining at the air-conditioned Nadi Restaurant, the Sunset Terrace or the open-air Veranda Grill & Bar. Enjoy cocktail at the Pavilion, an open-air Lounge with panoramic view. An extensive range of massages at the Spa, a souvenir shop, Arts and Gems centre.

<http://www.thiripyitsaya-resort.com/index.html>



INLE LAKE

INLE LAKE VIEW RESORT

The Inle Lake View Resort is built on 15 acres of lush land of trees and flowers, ideally located in a picturesque area overlooking the Inle Lake. Located on the western edge of the lake, the hotel offers luxury and elegance throughout. It offers 38 rooms, large and spacious, all with private balcony and excellent views on to the Lake, tastefully decorated in Burman – Asian style furniture and soft tropical hues. 20 Deluxe (king or twin) 45-55 sq.m / 16 Junior Suites 70 sqm / 2 Lake Side Villa 100 sq.m

Facilities: The Bougainvillea Restaurant | The Lotus Bar | Inle Lake View Spa | La-Boutique

For more details: www.inlelakeview.com



MANAGED BY AYRAVATA CRUISE COMPANY

SAILING DATES 2012-2013 (*)

SORTED BY CRUISES (ALPHABETIC ORDER)

BETWEEN ROYAL MANDALAY AND ANCIENT BAGAN

MANDALAY TO BAGAN (1 NIGHT) - DEPARTURE DAYS: THURSDAY

CODE	DEP DATE	ARR DATE	VESSEL	CODE	DEP DATE	ARR DATE	VESSEL
MB291	05/07/12	06/07/12	PK 07	MB481	03/01/13	04/01/13	PK 07
MB301	12/07/12	13/07/12	PK 07	MB491	10/01/13	11/01/13	PK 07
MB311	19/07/12	20/07/12	PK 07	MB491A	14/01/13	15/01/13	PK 12
MB321	26/07/12	27/07/12	PK 07	MB501	17/01/13	18/01/13	PK 07
MB331	02/08/12	03/08/12	PK 07	MB511	24/01/13	25/01/13	PK 07
MB341	09/08/12	10/08/12	PK 07	MB521	31/01/13	01/02/13	PK 07
MB351	16/08/12	17/08/12	PK 07	MB531	07/02/13	08/02/13	PK 07
MB361	23/08/12	24/08/12	PK 07	MB531A	07/02/13	08/02/13	PK 12
MB371	18/10/12	19/10/12	PK 07	MB541	14/02/13	15/02/13	PK 07
MB381	25/10/12	26/10/12	PK 07	MB551	21/02/13	22/02/13	PK 07
MB391	01/11/12	02/11/12	PK 07	MB561	28/02/13	01/03/13	PK 07
MB401	08/11/12	09/11/12	PK 07	MB561A	03/03/13	04/03/13	PK 12
MB411	15/11/12	16/11/12	PK 07	MB571	07/03/13	08/03/13	PK 07
MB411A	15/11/12	16/11/12	PK 12	MB581	14/03/13	15/03/13	PK 07
MB421	22/11/12	23/11/12	PK 07	MB591	21/03/13	22/03/13	PK 07
MB431	29/11/12	30/11/12	PK 07	MB601	28/03/13	29/03/13	PK 07
MB441	06/12/12	07/12/12	PK 07	MB611	04/04/13	05/04/13	PK 07
MB451	13/12/12	14/12/12	PK 07	MB621	11/04/13	12/04/13	PK 07
MB461	20/12/12	21/12/12	PK 07	MB631	18/04/13	19/04/13	PK 07
MB471	27/12/12	28/12/12	PK 07	MB641	25/04/13	26/04/13	PK 07

BAGAN TO MANDALAY (2 NIGHTS) * DEPARTURE DAYS: TUESDAY, FRIDAY

CODE	DEP DATE	ARR DATE	VESSEL	CODE	DEP DATE	ARR DATE	VESSEL
BM572	03/07/12	05/07/12	PK 07	BM962	04/01/13	06/01/13	PK 07
BM582	06/07/12	08/07/12	PK 07	BM972	08/01/13	10/01/13	PK 07
BM592	10/07/12	12/07/12	PK 07	BM982	11/01/13	13/01/13	PK 07
BM602	13/07/12	15/07/12	PK 07	BM992	15/01/13	17/01/13	PK 07
BM612	17/07/12	19/07/12	PK 07	BM992A	15/01/13	17/01/13	PK 12
BM622	20/07/12	22/07/12	PK 07	BM992B	15/01/13	17/01/13	PK1947
BM632	24/07/12	26/07/12	PK 07	BM1002	18/01/13	20/01/13	PK 07
BM642	27/07/12	29/07/12	PK 07	BM1012	22/01/13	24/01/13	PK 07
BM652	31/07/12	02/08/12	PK 07	BM1022	25/01/13	27/01/13	PK 07
BM662	03/08/12	05/08/12	PK 07	BM1032	29/01/13	31/01/13	PK 07
BM672	07/08/12	09/08/12	PK 07	BM1042	01/02/13	03/02/13	PK 07
BM682	10/08/12	12/08/12	PK 07	BM1052	05/02/13	07/02/13	PK 07
BM692	14/08/12	16/08/12	PK 07	BM1062	08/02/13	10/02/13	PK 07
BM702	17/08/12	19/08/12	PK 07	BM1062A	08/02/13	10/02/13	PK 12



MANAGED BY AYRAVATA CRUISE COMPANY

BM712	21/08/12	23/08/12	PK 07	BM1062B	08/02/13	10/02/13	PK1947
BM722	24/08/12	26/08/12	PK 07	BM1072	12/02/13	14/02/13	PK 07
BM732	16/10/12	18/10/12	PK 07	BM1082	15/02/13	17/02/13	PK 07
BM742	19/10/12	21/10/12	PK 07	BM1092	19/02/13	21/02/13	PK 07
BM752	23/10/12	25/10/12	PK 07	BM1102	22/02/13	24/02/13	PK 07
BM762	26/10/12	28/10/12	PK 07	BM1112	26/02/13	28/02/13	PK 07
BM772	30/10/12	01/11/12	PK 07	BM1122	01/03/13	03/03/13	PK 07
BM782	02/11/12	04/11/12	PK 07	BM1122A	04/03/13	06/03/13	PK 12
BM792	06/11/12	08/11/12	PK 07	BM1122B	04/03/13	06/03/13	PK1947
BM802	09/11/12	11/11/12	PK 07	BM1132	05/03/13	07/03/13	PK 07
BM812	13/11/12	15/11/12	PK 07	BM1142	08/03/13	10/03/13	PK 07
BM822A	16/11/12	18/11/12	PK 12	BM1152	12/03/13	14/03/13	PK 07
BM822B	16/11/12	18/11/12	PK1947	BM1162	15/03/13	17/03/13	PK 07
BM822	16/11/12	18/11/12	PK 07	BM1172	19/03/13	21/03/13	PK 07
BM832	20/11/12	22/11/12	PK 07	BM1182	22/03/13	24/03/13	PK 07
BM842	23/11/12	25/11/12	PK 07	BM1192	26/03/13	28/03/13	PK 07
BM852	27/11/12	29/11/12	PK 07	BM1202	29/03/13	31/03/13	PK 07
BM862	30/11/12	02/12/12	PK 07	BM1212	02/04/13	04/04/13	PK 07
BM872	04/12/12	06/12/12	PK 07	BM1222	05/04/13	07/04/13	PK 07
BM882	07/12/12	09/12/12	PK 07	BM1232	09/04/13	11/04/13	PK 07
BM892	11/12/12	13/12/12	PK 07	BM1242	12/04/13	14/04/13	PK 07
BM902	14/12/12	16/12/12	PK 07	BM1252	16/04/13	18/04/13	PK 07
BM912	18/12/12	20/12/12	PK 07	BM1262	19/04/13	21/04/13	PK 07
BM922	21/12/12	23/12/12	PK 07	BM1272	23/04/13	25/04/13	PK 07
BM932	25/12/12	27/12/12	PK 07	BM1282	26/04/13	28/04/13	PK 07
BM942	28/12/12	30/12/12	PK 07	BM1292	30/04/13	02/05/13	PK 07
BM952	01/01/13	03/01/13	PK 07				

MANDALAY TO BAGAN (2 NIGHTS) / DEPARTURE DAY: SUNDAY

CODE	DEP DATE	ARR DATE	VESSEL	CODE	DEP DATE	ARR DATE	VESSEL
MB302	01/07/12	03/07/12	PK 07	MB502	06/01/13	08/01/13	PK 07
MB312	08/07/12	10/07/12	PK 07	MB512	13/01/13	15/01/13	PK 07
MB322	15/07/12	17/07/12	PK 07	MB512A	13/01/13	15/01/13	PK1947
MB332	22/07/12	24/07/12	PK 07	MB522	20/01/13	22/01/13	PK 07
MB342	29/07/12	30/07/12	PK 07	MB532	27/01/13	29/01/13	PK 07
MB352	05/08/12	07/08/12	PK 07	MB542	03/02/13	05/02/13	PK 07
MB362	12/08/12	14/08/12	PK 07	MB542A	06/02/13	08/02/13	PK1947
MB372	19/08/12	21/08/12	PK 07	MB552	10/02/13	12/02/13	PK 07
MB382	14/10/12	16/10/12	PK 07	MB562	17/02/13	19/02/13	PK 07
MB392	21/10/12	23/10/12	PK 07	MB572	24/02/13	26/02/13	PK 07
MB402	28/10/12	30/10/12	PK 07	MB572A	02/03/13	04/03/13	PK1947
MB412	04/11/12	06/11/12	PK 07	MB582	03/03/13	05/03/13	PK 07
MB422	11/11/12	13/11/12	PK 07	MB592	10/03/13	12/03/13	PK 07
MB422A	14/11/12	16/11/12	PK1947	MB602	17/03/13	19/03/13	PK 07
MB432	18/11/12	20/11/12	PK 07	MB612	24/03/13	26/03/13	PK 07
MB442	25/11/12	27/11/12	PK 07	MB622	31/03/13	02/04/13	PK 07



MANAGED BY AYRAVATA CRUISE COMPANY

MB452	02/12/12	04/12/12	PK 07	MB632	07/04/13	09/04/13	PK 07
MB462	09/12/12	11/12/12	PK 07	MB642	14/04/13	16/04/13	PK 07
MB472	16/12/12	18/12/12	PK 07	MB652	21/04/13	23/04/13	PK 07
MB482	23/12/12	25/12/12	PK 07	MB662	28/04/13	30/04/13	PK 07
MB492	30/12/12	01/12/12	PK 07				

(#) NEW YEAR'S EVE CRUISE DEPARTURE (30 DECEMBER 2012): DETAILED PROGRAMME TBA

NOTE: All Cruises Codes with "A" or "B" suffix indicates additional departures out of the usual days of the week

GRAND VOYAGE OF THE CHINDWIN RIVER

9 NIGHTS

CODE	DEP DATE	ARR DATE	VESSEL	CODE	DEP DATE	ARR DATE	VESSEL
TGV005	24/07/12	02/08/12	PK12	TGV007	04/09/12	13/09/12	PK12
TGV006	05/08/12	14/08/12	PK12	TGV008	16/09/12	25/09/12	PK12

GOLDEN MYANMAR (NEW)

10 NIGHTS

UPSTREAM

CODE	DEP DATE	ARR DATE	VESSEL	CODE	DEP DATE	ARR DATE	VESSEL
GM15U	13/10/12	23/10/12	PK1947	GM19U	27/01/13	06/02/13	PK1947
GM16U	04/11/12	14/11/12	PK1947	GM20U	20/02/13	02/03/13	PK1947
GM17U	28/11/12	08/12/12	PK1947	GM21U	16/03/13	26/03/13	PK1947
GM18U	03/01/13	13/01/13	PK1947				

DOWNSTREAM

CODE	DEP DATE	ARR DATE	VESSEL	CODE	DEP DATE	ARR DATE	VESSEL
GM15D	03/10/12	13/10/12	PK1947	GM19D	17/01/13	27/01/13	PK1947
GM16D	25/10/12	04/11/12	PK1947	GM20D	10/02/13	20/02/13	PK1947
GM17D	18/11/12	28/11/12	PK1947	GM21D	06/03/13	16/03/13	PK1947
GM18D	24/12/12	03/01/13	PK1947				

(#) NEW YEAR'S EVE CRUISE DEPARTURE (28 DECEMBER 2012): RATES & DETAILED PROGRAMME TBA

THE ROYAL CAPITALS (NEW)

5 NIGHTS

UPSTREAM

CODE	DEP DATE	ARR DATE	VESSEL	CODE	DEP DATE	ARR DATE	VESSEL
RC15U	18/10/12	23/10/12	PK1947	RC19U	01/02/13	06/02/13	PK1947
RC16U	09/11/12	14/11/12	PK1947	RC20U	25/02/13	02/03/13	PK1947
RC17U	03/12/12	08/12/12	PK1947	RC21U	21/03/13	26/03/13	PK1947
RC18U	08/01/13	13/01/13	PK1947				

DOWNSTREAM

CODE	DEP DATE	ARR DATE	VESSEL	CODE	DEP DATE	ARR DATE	VESSEL
RC15D	03/10/12	08/10/12	PK1947	RC19D	17/01/13	22/01/13	PK1947
RC16D	25/10/12	30/10/12	PK1947	RC20D	10/02/13	15/02/13	PK1947
RC17D	18/11/12	23/11/12	PK1947	RC21D	06/03/13	11/03/13	PK1947
RC18D	24/12/12	29/12/12	PK1947				



MANAGED BY AYRAVATA CRUISE COMPANY

MYANMAR DAYS (NEW)

10 NIGHTS

UPSTREAM

CODE	DEP DATE	ARR DATE	VESSEL	CODE	DEP DATE	ARR DATE	VESSEL
MD005U	14/10/12	24/10/12	PK12	MD009U	28/01/13	07/02/13	PK12
MD006U	05/11/12	15/11/12	PK12	MD010U	21/02/13	03/03/13	PK12
MD007U	29/11/12	09/12/12	PK12	MD011U	17/03/13	27/03/13	PK12
MD008U	04/01/13	14/01/13	PK12				

DOWNSTREAM

CODE	DEP DATE	ARR DATE	VESSEL	CODE	DEP DATE	ARR DATE	VESSEL
MD005D	02/10/12	12/10/12	PK12	MD009D	17/01/13	27/01/13	PK12
MD006D	25/10/12	04/11/12	PK12	MD010D	10/02/13	20/02/13	PK12
MD007D	18/11/12	28/11/12	PK12	MD011D	06/03/13	16/03/13	PK12
MD008D	24/12/12	03/01/13	PK12				

THE ROYAL MYANMAR (NEW)

4 NIGHTS

UPSTREAM

CODE	DEP DATE	ARR DATE	VESSEL	CODE	DEP DATE	ARR DATE	VESSEL
RM05U	14/10/12	18/10/12	PK12	RM09U	28/01/13	01/02/13	PK12
RM06U	05/11/12	09/11/12	PK12	RM10U	21/02/13	25/02/13	PK12
RM07U	29/11/12	03/12/12	PK12	RM11U	17/03/13	21/03/13	PK12
RM08U	04/01/13	08/01/13	PK12				

DOWNSTREAM

CODE	DEP DATE	ARR DATE	VESSEL	CODE	DEP DATE	ARR DATE	VESSEL
RM05D	08/10/12	12/10/12	PK12	RM09D	23/01/13	27/01/13	PK12
RM06D	31/10/12	04/11/12	PK12	RM10D	16/02/13	20/02/13	PK12
RM07D	24/11/12	28/11/12	PK12	RM11D	12/03/13	16/03/13	PK12
RM08D	30/12/12	03/01/13	PK12				

THE UPPER IRRAWADDY (NEW)

6 NIGHTS

UPSTREAM

CODE	DEP DATE	ARR DATE	VESSEL	CODE	DEP DATE	ARR DATE	VESSEL
UI01U	02/10/12	08/10/12	PK12	UI08U	08/01/13	14/01/13	PK12
UI02U	18/10/12	24/10/12	PK12	UI09U	17/01/13	23/01/13	PK12
UI03U	25/10/12	31/10/12	PK12	UI10U	01/02/13	07/02/13	PK12
UI04U	09/11/12	15/11/12	PK12	UI11U	10/02/13	16/02/13	PK12
UI05U	18/11/12	24/11/12	PK12	UI12U	25/02/13	03/03/13	PK12
UI06U	03/12/12	09/12/12	PK12	UI13U	06/03/13	12/03/13	PK12
UI07U	24/12/12	30/12/12	PK12	UI14U	21/03/13	27/03/13	PK12

(*): If deemed necessary, Company reserves the right at its sole option and discretion, without any liability for damages or refund to substitute the scheduled vessel with another equivalent of its fleet.



MANAGED BY AYRAVATA CRUISE COMPANY

SORTED BY DATES

ALL CRUISES

CRUISE	ROUTE	DEP DATE	ARR DATE	VESSEL	CODE
From Royal Mandalay to Ancient Bagan (2N)	Downstream	01/07/12	03/07/12	PK 07	MB302
Between Ancient Bagan and Royal Mandalay (2N)	Upstream	03/07/12	05/07/12	PK 07	BM572
Between Royal Mandalay and Ancient Bagan (1N)	Downstream	05/07/12	06/07/12	PK 07	MB291
Between Ancient Bagan and Royal Mandalay (2N)	Upstream	06/07/12	08/07/12	PK 07	BM582
From Royal Mandalay to Ancient Bagan (2N)	Downstream	08/07/12	10/07/12	PK 07	MB312
Between Ancient Bagan and Royal Mandalay (2N)	Upstream	10/07/12	12/07/12	PK 07	BM592
Between Royal Mandalay and Ancient Bagan (1N)	Downstream	12/07/12	13/07/12	PK 07	MB301
Between Ancient Bagan and Royal Mandalay (2N)	Upstream	13/07/12	15/07/12	PK 07	BM602
From Royal Mandalay to Ancient Bagan (2N)	Downstream	15/07/12	17/07/12	PK 07	MB322
Between Ancient Bagan and Royal Mandalay (2N)	Upstream	17/07/12	19/07/12	PK 07	BM612
Between Royal Mandalay and Ancient Bagan (1N)	Downstream	19/07/12	20/07/12	PK 07	MB311
Between Ancient Bagan and Royal Mandalay (2N)	Upstream	20/07/12	22/07/12	PK 07	BM622
From Royal Mandalay to Ancient Bagan (2N)	Downstream	22/07/12	24/07/12	PK 07	MB332
Between Ancient Bagan and Royal Mandalay (2N)	Upstream	24/07/12	26/07/12	PK 07	BM632
The Grand Voyage of The Chindwin River (9N)	Upstream	24/07/12	02/08/12	PK1947 or PK12	TGV005
Between Royal Mandalay and Ancient Bagan (1N)	Downstream	26/07/12	27/07/12	PK 07	MB321
Between Ancient Bagan and Royal Mandalay (2N)	Upstream	27/07/12	29/07/12	PK 07	BM642
From Royal Mandalay to Ancient Bagan (2N)	Downstream	29/07/12	30/07/12	PK 07	MB342
Between Ancient Bagan and Royal Mandalay (2N)	Upstream	31/07/12	02/08/12	PK 07	BM652
Between Royal Mandalay and Ancient Bagan (1N)	Downstream	02/08/12	03/08/12	PK 07	MB331
Between Ancient Bagan and Royal Mandalay (2N)	Upstream	03/08/12	05/08/12	PK 07	BM662
From Royal Mandalay to Ancient Bagan (2N)	Downstream	05/08/12	07/08/12	PK 07	MB352
The Grand Voyage of The Chindwin River (9N)	Upstream	05/08/12	14/08/12	PK1947 or PK12	TGV006
Between Ancient Bagan and Royal Mandalay (2N)	Upstream	07/08/12	09/08/12	PK 07	BM672
Between Royal Mandalay and Ancient Bagan (1N)	Downstream	09/08/12	10/08/12	PK 07	MB341
Between Ancient Bagan and Royal Mandalay (2N)	Upstream	10/08/12	12/08/12	PK 07	BM682
From Royal Mandalay to Ancient Bagan (2N)	Downstream	12/08/12	14/08/12	PK 07	MB362



MANAGED BY AYRAVATA CRUISE COMPANY

Between Ancient Bagan and Royal Mandalay (2N)	Upstream	14/08/12	16/08/12	PK 07	BM692
Between Royal Mandalay and Ancient Bagan (1N)	Downstream	16/08/12	17/08/12	PK 07	MB351
Between Ancient Bagan and Royal Mandalay (2N)	Upstream	17/08/12	19/08/12	PK 07	BM702
From Royal Mandalay to Ancient Bagan (2N)	Downstream	19/08/12	21/08/12	PK 07	MB372
Between Ancient Bagan and Royal Mandalay (2N)	Upstream	21/08/12	23/08/12	PK 07	BM712
Between Royal Mandalay and Ancient Bagan (1N)	Downstream	23/08/12	24/08/12	PK 07	MB361
Between Ancient Bagan and Royal Mandalay (2N)	Upstream	24/08/12	26/08/12	PK 07	BM722
The Grand Voyage of The Chindwin River (9N)	Upstream	04/09/12	13/09/12	PK12	TGV007
The Grand Voyage of The Chindwin River (9N)	Upstream	16/09/12	25/09/12	PK12	TGV008
Myanmar Days (10 N)	Downstream	02/10/12	12/10/12	PK 12	MD005D
The Upper Irrawaddy (6N)	Upstream	02/10/12	08/10/12	PK12	UI01U
Golden Myanmar (10N)	Downstream	03/10/12	13/10/12	PK1947	GM15D
The Royal Capitals (5N)	Downstream	03/10/12	08/10/12	PK1947	RC15D
The Royal Myanmar (4N)	Downstream	08/10/12	12/10/12	PK 12	RM05D
Golden Myanmar (10N)	Upstream	13/10/12	23/10/12	PK1947	GM15U
From Royal Mandalay to Ancient Bagan (2N)	Downstream	14/10/12	16/10/12	PK 07	MB382
Myanmar Days (10 N)	Upstream	14/10/12	24/10/12	PK 12	MD005U
The Royal Myanmar (4N)	Upstream	14/10/12	18/10/12	PK 12	RM05U
Between Ancient Bagan and Royal Mandalay (2N)	Upstream	16/10/12	18/10/12	PK 07	BM732
Between Royal Mandalay and Ancient Bagan (1N)	Downstream	18/10/12	19/10/12	PK 07	MB371
The Royal Capitals (5N)	Upstream	18/10/12	23/10/12	PK1947	RC15U
The Upper Irrawaddy (6N)	Upstream	18/10/12	24/10/12	PK12	UI02U
Between Ancient Bagan and Royal Mandalay (2N)	Upstream	19/10/12	21/10/12	PK 07	BM742
From Royal Mandalay to Ancient Bagan (2N)	Downstream	21/10/12	23/10/12	PK 07	MB392
Between Ancient Bagan and Royal Mandalay (2N)	Upstream	23/10/12	25/10/12	PK 07	BM752
Between Royal Mandalay and Ancient Bagan (1N)	Downstream	25/10/12	26/10/12	PK 07	MB381
Golden Myanmar (10N)	Downstream	25/10/12	04/11/12	PK1947	GM16D
Myanmar Days (10 N)	Downstream	25/10/12	04/11/12	PK 12	MD006D
The Royal Capitals (5N)	Downstream	25/10/12	30/10/12	PK1947	RC16D
The Upper Irrawaddy (6N)	Upstream	25/10/12	31/10/12	PK12	UI03U
Between Ancient Bagan and Royal Mandalay (2N)	Upstream	26/10/12	28/10/12	PK 07	BM762



MANAGED BY AYRAVATA CRUISE COMPANY

From Royal Mandalay to Ancient Bagan (2N)	Downstream	28/10/12	30/10/12	PK 07	MB402
Between Ancient Bagan and Royal Mandalay (2N)	Upstream	30/10/12	01/11/12	PK 07	BM772
The Royal Myanmar (4N)	Downstream	31/10/12	04/11/12	PK 12	RM06D
Between Royal Mandalay and Ancient Bagan (1N)	Downstream	01/11/12	02/11/12	PK 07	MB391
Between Ancient Bagan and Royal Mandalay (2N)	Upstream	02/11/12	04/11/12	PK 07	BM782
From Royal Mandalay to Ancient Bagan (2N)	Downstream	04/11/12	06/11/12	PK 07	MB412
Golden Myanmar (10N)	Upstream	04/11/12	14/11/12	PK1947	GM16U
Myanmar Days (10 N)	Upstream	05/11/12	15/11/12	PK 12	MD006U
The Royal Myanmar (4N)	Upstream	05/11/12	09/11/12	PK 12	RM06U
Between Ancient Bagan and Royal Mandalay (2N)	Upstream	06/11/12	08/11/12	PK 07	BM792
Between Royal Mandalay and Ancient Bagan (1N)	Downstream	08/11/12	09/11/12	PK 07	MB401
Between Ancient Bagan and Royal Mandalay (2N)	Upstream	09/11/12	11/11/12	PK 07	BM802
The Royal Capitals (5N)	Upstream	09/11/12	14/11/12	PK1947	RC16U
The Upper Irrawaddy (6N)	Upstream	09/11/12	15/11/12	PK12	UI04U
From Royal Mandalay to Ancient Bagan (2N)	Downstream	11/11/12	13/11/12	PK 07	MB422
Between Ancient Bagan and Royal Mandalay (2N)	Upstream	13/11/12	15/11/12	PK 07	BM812
From Royal Mandalay to Ancient Bagan (2N)	Downstream	14/11/12	16/11/12	PK1947	MB422A
Between Royal Mandalay and Ancient Bagan (1N)	Downstream	15/11/12	16/11/12	PK 12	MB411A
Between Royal Mandalay and Ancient Bagan (1N)	Downstream	15/11/12	16/11/12	PK 07	MB411
Between Ancient Bagan and Royal Mandalay (2N)	Upstream	16/11/12	18/11/12	PK12	BM822A
Between Ancient Bagan and Royal Mandalay (2N)	Upstream	16/11/12	18/11/12	PK1947	BM822B
Between Ancient Bagan and Royal Mandalay (2N)	Upstream	16/11/12	18/11/12	PK 07	BM822
From Royal Mandalay to Ancient Bagan (2N)	Downstream	18/11/12	20/11/12	PK 07	MB432
Golden Myanmar (10N)	Downstream	18/11/12	28/11/12	PK1947	GM17D
Myanmar Days (10 N)	Downstream	18/11/12	28/11/12	PK 12	MD007D
The Royal Capitals (5N)	Downstream	18/11/12	23/12/12	PK1947	RC17D
The Upper Irrawaddy (6N)	Upstream	18/11/12	24/11/12	PK12	UI05U
Between Ancient Bagan and Royal Mandalay (2N)	Upstream	20/11/12	22/11/12	PK 07	BM832
Between Royal Mandalay and Ancient Bagan (1N)	Downstream	22/11/12	23/11/12	PK 07	MB421
Between Ancient Bagan and Royal Mandalay (2N)	Upstream	23/11/12	25/11/12	PK 07	BM842
The Royal Myanmar (4N)	Downstream	24/11/12	28/11/12	PK 12	RM07D



MANAGED BY AYRAVATA CRUISE COMPANY

From Royal Mandalay to Ancient Bagan (2N)	Downstream	25/11/12	27/11/12	PK 07	MB442
Between Ancient Bagan and Royal Mandalay (2N)	Upstream	27/11/12	29/11/12	PK 07	BM852
Myanmar Days (10 N)	Upstream	27/11/12	08/12/12	PK 12	MD007U
Golden Myanmar (10N)	Upstream	28/11/12	08/12/12	PK1947	GM17U
Between Royal Mandalay and Ancient Bagan (1N)	Downstream	29/11/12	30/11/12	PK 07	MB431
The Royal Myanmar (4N)	Upstream	29/11/12	03/12/12	PK 12	RM07U
Between Ancient Bagan and Royal Mandalay (2N)	Upstream	30/11/12	02/12/12	PK 07	BM862
From Royal Mandalay to Ancient Bagan (2N)	Downstream	02/12/12	04/12/12	PK 07	MB452
The Royal Capitals (5N)	Upstream	03/12/12	08/12/12	PK1947	RC17U
The Upper Irrawaddy (6N)	Upstream	03/12/12	09/12/12	PK12	UI06U
Between Ancient Bagan and Royal Mandalay (2N)	Upstream	04/12/12	06/12/12	PK 07	BM872
Between Royal Mandalay and Ancient Bagan (1N)	Downstream	06/12/12	07/12/12	PK 07	MB441
Between Ancient Bagan and Royal Mandalay (2N)	Upstream	07/12/12	09/12/12	PK 07	BM882
From Royal Mandalay to Ancient Bagan (2N)	Downstream	09/12/12	11/12/12	PK 07	MB462
Between Ancient Bagan and Royal Mandalay (2N)	Upstream	11/12/12	13/12/12	PK 07	BM892
Between Royal Mandalay and Ancient Bagan (1N)	Downstream	13/12/12	14/12/12	PK 07	MB451
Between Ancient Bagan and Royal Mandalay (2N)	Upstream	14/12/12	16/12/12	PK 07	BM902
From Royal Mandalay to Ancient Bagan (2N)	Downstream	16/12/12	18/12/12	PK 07	MB472
Between Ancient Bagan and Royal Mandalay (2N)	Upstream	18/12/12	20/12/12	PK 07	BM912
Between Royal Mandalay and Ancient Bagan (1N)	Downstream	20/12/12	21/12/12	PK 07	MB461
Between Ancient Bagan and Royal Mandalay (2N)	Upstream	21/12/12	23/12/12	PK 07	BM922
From Royal Mandalay to Ancient Bagan (2N)	Downstream	23/12/12	25/12/12	PK 07	MB482
Golden Myanmar (10N)	Downstream	24/12/12	03/01/13	PK1947	GM18D
Golden Myanmar (10N)	Downstream	24/12/12	03/01/13	PK1947	GM18D
Myanmar Days (10 N)	Downstream	24/12/12	03/01/13	PK 12	MD008D
The Royal Capitals (5N)	Downstream	24/12/12	29/12/12	PK1947	RC18D
The Upper Irrawaddy (6N)	Upstream	24/12/12	30/12/12	PK12	UI07U
Between Ancient Bagan and Royal Mandalay (2N)	Upstream	25/12/12	27/12/12	PK 07	BM932
Between Royal Mandalay and Ancient Bagan (1N)	Downstream	27/12/12	28/12/12	PK 07	MB471
Between Ancient Bagan and Royal Mandalay (2N)	Upstream	28/12/12	30/12/12	PK 07	BM942
From Royal Mandalay to Ancient Bagan (2N)	Downstream	30/12/12	01/12/13	PK 07	MB492



MANAGED BY AYRAVATA CRUISE COMPANY

The Royal Myanmar (4N)	Downstream	30/12/12	03/01/13	PK 12	RM08D
Between Ancient Bagan and Royal Mandalay (2N)	Upstream	01/01/13	03/01/13	PK 07	BM952
Between Royal Mandalay and Ancient Bagan (1N)	Downstream	03/01/13	04/01/13	PK 07	MB481
Golden Myanmar (10N)	Upstream	03/01/13	13/01/13	PK1947	GM18U
Between Ancient Bagan and Royal Mandalay (2N)	Upstream	04/01/13	06/01/13	PK 07	BM962
Myanmar Days (10 N)	Upstream	04/01/13	14/01/13	PK 12	MD008U
The Royal Myanmar (4N)	Upstream	04/01/13	08/01/13	PK 12	RM08U
From Royal Mandalay to Ancient Bagan (2N)	Downstream	06/01/13	08/01/13	PK 07	MB502
Between Ancient Bagan and Royal Mandalay (2N)	Upstream	08/01/13	10/01/13	PK 07	BM972
The Royal Capitals (5N)	Upstream	08/01/13	13/01/13	PK1947	RC18U
The Upper Irrawaddy (6N)	Upstream	08/01/13	14/01/13	PK12	UI08U
Between Royal Mandalay and Ancient Bagan (1N)	Downstream	10/01/13	11/01/13	PK 07	MB491
Between Ancient Bagan and Royal Mandalay (2N)	Upstream	11/01/13	13/01/13	PK 07	BM982
From Royal Mandalay to Ancient Bagan (2N)	Downstream	13/01/13	15/01/13	PK 07	MB512
From Royal Mandalay to Ancient Bagan (2N)	Downstream	13/01/13	15/01/13	PK1947	MB512A
Between Royal Mandalay and Ancient Bagan (1N)	Downstream	14/01/13	15/01/13	PK 12	MB491A
Between Ancient Bagan and Royal Mandalay (2N)	Upstream	15/01/13	17/01/13	PK 07	BM992
Between Ancient Bagan and Royal Mandalay (2N)	Upstream	15/01/13	17/01/13	PK12	BM992A
Between Ancient Bagan and Royal Mandalay (2N)	Upstream	15/01/13	17/01/13	PK1947	BM992B
Between Royal Mandalay and Ancient Bagan (1N)	Downstream	17/01/13	18/01/13	PK 07	MB501
Golden Myanmar (10N)	Downstream	17/01/13	27/01/13	PK1947	GM19D
Myanmar Days (10 N)	Downstream	17/01/13	27/01/13	PK 12	MD009D
The Royal Capitals (5N)	Downstream	17/01/13	22/01/13	PK1947	RC19D
The Upper Irrawaddy (6N)	Upstream	17/01/13	23/01/13	PK12	UI09U
Between Ancient Bagan and Royal Mandalay (2N)	Upstream	18/01/13	20/01/13	PK 07	BM1002
From Royal Mandalay to Ancient Bagan (2N)	Downstream	20/01/13	22/01/13	PK 07	MB522
Between Ancient Bagan and Royal Mandalay (2N)	Upstream	22/01/13	24/01/13	PK 07	BM1012
The Royal Myanmar (4N)	Downstream	23/01/13	27/01/13	PK 12	RM09D
Between Royal Mandalay and Ancient Bagan (1N)	Downstream	24/01/13	25/01/13	PK 07	MB511
Between Ancient Bagan and Royal Mandalay (2N)	Upstream	25/01/13	27/01/13	PK 07	BM1022
From Royal Mandalay to Ancient Bagan (2N)	Downstream	27/01/13	29/01/13	PK 07	MB532



MANAGED BY AYRAVATA CRUISE COMPANY

Golden Myanmar (10N)	Upstream	27/01/13	06/02/13	PK1947	GM19U
Myanmar Days (10N)	Upstream	28/01/13	07/02/13	PK 12	MD009U
The Royal Myanmar (4N)	Upstream	28/01/13	01/02/13	PK 12	RM09U
Between Ancient Bagan and Royal Mandalay (2N)	Upstream	29/01/13	31/01/13	PK 07	BM1032
Between Royal Mandalay and Ancient Bagan (1N)	Downstream	31/01/13	01/02/13	PK 07	MB521
Between Ancient Bagan and Royal Mandalay (2N)	Upstream	01/02/13	03/02/13	PK 07	BM1042
The Royal Capitals (5N)	Upstream	01/02/13	06/02/13	PK1947	RC19U
The Upper Irrawaddy (6N)	Upstream	01/02/13	07/02/13	PK12	UI10U
From Royal Mandalay to Ancient Bagan (2N)	Downstream	03/02/13	05/02/13	PK 07	MB542
Between Ancient Bagan and Royal Mandalay (2N)	Upstream	05/02/13	07/02/13	PK 07	BM1052
From Royal Mandalay to Ancient Bagan (2N)	Downstream	06/02/13	08/02/13	PK1947	MB542A
Between Royal Mandalay and Ancient Bagan (1N)	Downstream	07/02/13	08/02/13	PK 07	MB531
Between Royal Mandalay and Ancient Bagan (1N)	Downstream	07/02/13	08/02/13	PK 12	MB531A
Between Ancient Bagan and Royal Mandalay (2N)	Upstream	08/02/13	10/02/13	PK 07	BM1062
Between Ancient Bagan and Royal Mandalay (2N)	Upstream	08/02/13	10/02/13	PK12	BM1062A
Between Ancient Bagan and Royal Mandalay (2N)	Upstream	08/02/13	10/02/13	PK1947	BM1062B
From Royal Mandalay to Ancient Bagan (2N)	Downstream	10/02/13	12/02/13	PK 07	MB552
Golden Myanmar (10N)	Downstream	10/02/13	20/02/13	PK1947	GM20D
Myanmar Days (10 N)	Downstream	10/02/13	20/02/13	PK 12	MD010D
The Royal Capitals (5N)	Downstream	10/02/13	15/02/13	PK1947	RC20D
The Upper Irrawaddy (6N)	Upstream	10/02/13	16/02/13	PK12	UI11U
Between Ancient Bagan and Royal Mandalay (2N)	Upstream	12/02/13	14/02/13	PK 07	BM1072
Between Royal Mandalay and Ancient Bagan (1N)	Downstream	14/02/13	15/02/13	PK 07	MB541
Between Ancient Bagan and Royal Mandalay (2N)	Upstream	15/02/13	17/02/13	PK 07	BM1082
The Royal Myanmar (4N)	Downstream	16/02/13	20/02/13	PK 12	RM10D
From Royal Mandalay to Ancient Bagan (2N)	Downstream	17/02/13	19/02/13	PK 07	MB562
Between Ancient Bagan and Royal Mandalay (2N)	Upstream	19/02/13	21/02/13	PK 07	BM1092
Golden Myanmar (10N)	Upstream	20/02/13	02/03/13	PK1947	GM20U
Between Royal Mandalay and Ancient Bagan (1N)	Downstream	21/02/13	22/02/13	PK 07	MB551
Myanmar Days (10 N)	Upstream	21/02/13	03/03/13	PK 12	MD010U
The Royal Myanmar (4N)	Upstream	21/02/13	25/02/13	PK 12	RM10U



MANAGED BY AYRAVATA CRUISE COMPANY

Between Ancient Bagan and Royal Mandalay (2N)	Upstream	22/02/13	24/02/13	PK 07	BM1102
From Royal Mandalay to Ancient Bagan (2N)	Downstream	24/02/13	26/02/13	PK 07	MB572
The Royal Capitals (5N)	Upstream	25/02/13	02/03/13	PK1947	RC20U
The Upper Irrawaddy (6N)	Upstream	25/02/13	03/03/13	PK12	UI12U
Between Ancient Bagan and Royal Mandalay (2N)	Upstream	26/02/13	28/02/13	PK 07	BM1112
Between Royal Mandalay and Ancient Bagan (1N)	Downstream	28/02/13	01/03/13	PK 07	MB561
Between Ancient Bagan and Royal Mandalay (2N)	Upstream	01/03/13	03/03/13	PK 07	BM1122
From Royal Mandalay to Ancient Bagan (2N)	Downstream	02/03/13	04/03/13	PK1947	MB572A
Between Royal Mandalay and Ancient Bagan (1N)	Downstream	03/03/13	04/03/13	PK 12	MB561A
From Royal Mandalay to Ancient Bagan (2N)	Downstream	03/03/13	05/03/13	PK 07	MB582
Between Ancient Bagan and Royal Mandalay (2N)	Upstream	04/03/13	06/03/13	PK12	BM1122A
Between Ancient Bagan and Royal Mandalay (2N)	Upstream	04/03/13	06/03/13	PK1947	BM1122B
Between Ancient Bagan and Royal Mandalay (2N)	Upstream	05/03/13	07/03/13	PK 07	BM1132
Golden Myanmar (10N)	Downstream	06/03/13	16/03/13	PK1947	GM21D
Myanmar Days (10 N)	Downstream	06/03/13	16/03/13	PK 12	MD011D
The Royal Capitals (5N)	Downstream	06/03/13	11/03/13	PK1947	RC21D
The Royal Capitals (5N)	Upstream	06/03/13	11/03/13	PK1947	RC22U
The Upper Irrawaddy (6N)	Upstream	06/03/13	12/03/13	PK12	UI13U
Between Royal Mandalay and Ancient Bagan (1N)	Downstream	07/03/13	08/03/13	PK 07	MB571
Between Ancient Bagan and Royal Mandalay (2N)	Upstream	08/03/13	10/03/13	PK 07	BM1142
From Royal Mandalay to Ancient Bagan (2N)	Downstream	10/03/13	12/03/13	PK 07	MB592
Between Ancient Bagan and Royal Mandalay (2N)	Upstream	12/03/13	14/03/13	PK 07	BM1152
The Royal Myanmar (4N)	Downstream	12/03/13	16/03/13	PK 12	RM11D
Between Royal Mandalay and Ancient Bagan (1N)	Downstream	14/03/13	15/03/13	PK 07	MB581
Between Ancient Bagan and Royal Mandalay (2N)	Upstream	15/03/13	17/03/13	PK 07	BM1162
Golden Myanmar (10N)	Upstream	16/03/13	26/03/13	PK1947	GM21U
From Royal Mandalay to Ancient Bagan (2N)	Downstream	17/03/13	19/03/13	PK 07	MB602
Myanmar Days (10 N)	Upstream	17/03/13	27/03/13	PK 12	MD011U
The Royal Myanmar (4N)	Upstream	17/03/13	21/03/13	PK 12	RM11U
Between Ancient Bagan and Royal Mandalay (2N)	Upstream	19/03/13	21/03/13	PK 07	BM1172
Between Royal Mandalay and Ancient Bagan (1N)	Downstream	21/03/13	22/03/13	PK 07	MB591
The Royal Capitals (5N)	Upstream	21/03/13	26/03/13	PK1947	RC21U



MANAGED BY AYRAVATA CRUISE COMPANY

The Upper Irrawaddy (6N)	Upstream	21/03/13	27/03/13	PK12	UI14U
Between Ancient Bagan and Royal Mandalay (2N)	Upstream	22/03/13	24/03/13	PK 07	BM1182
Myanmar Days (10 N)	Upstream	22/03/13	01/04/13	PK 12	MD013U
From Royal Mandalay to Ancient Bagan (2N)	Downstream	24/03/13	26/03/13	PK 07	MB612
Between Ancient Bagan and Royal Mandalay (2N)	Upstream	26/03/13	28/03/13	PK 07	BM1192
Between Royal Mandalay and Ancient Bagan (1N)	Downstream	28/03/13	29/03/13	PK 07	MB601
Between Ancient Bagan and Royal Mandalay (2N)	Upstream	29/03/13	31/03/13	PK 07	BM1202
From Royal Mandalay to Ancient Bagan (2N)	Downstream	31/03/13	02/04/13	PK 07	MB622
Between Ancient Bagan and Royal Mandalay (2N)	Upstream	02/04/13	04/04/13	PK 07	BM1212
Between Royal Mandalay and Ancient Bagan (1N)	Downstream	04/04/13	05/04/13	PK 07	MB611
Between Ancient Bagan and Royal Mandalay (2N)	Upstream	05/04/13	07/04/13	PK 07	BM1222
From Royal Mandalay to Ancient Bagan (2N)	Downstream	07/04/13	09/04/13	PK 07	MB632
Between Ancient Bagan and Royal Mandalay (2N)	Upstream	09/04/13	11/04/13	PK 07	BM1232
Between Royal Mandalay and Ancient Bagan (1N)	Downstream	11/04/13	12/04/13	PK 07	MB621
Between Ancient Bagan and Royal Mandalay (2N)	Upstream	12/04/13	14/04/13	PK 07	BM1242
From Royal Mandalay to Ancient Bagan (2N)	Downstream	14/04/13	16/04/13	PK 07	MB642
Between Ancient Bagan and Royal Mandalay (2N)	Upstream	16/04/13	18/04/13	PK 07	BM1252
Between Royal Mandalay and Ancient Bagan (1N)	Downstream	18/04/13	19/04/13	PK 07	MB631
Between Ancient Bagan and Royal Mandalay (2N)	Upstream	19/04/13	21/04/13	PK 07	BM1262
From Royal Mandalay to Ancient Bagan (2N)	Downstream	21/04/13	23/04/13	PK 07	MB652
Between Ancient Bagan and Royal Mandalay (2N)	Upstream	23/04/13	25/04/13	PK 07	BM1272
Between Royal Mandalay and Ancient Bagan (1N)	Downstream	25/04/13	26/04/13	PK 07	MB641
Between Ancient Bagan and Royal Mandalay (2N)	Upstream	26/04/13	28/04/13	PK 07	BM1282
From Royal Mandalay to Ancient Bagan (2N)	Downstream	28/04/13	30/04/13	PK 07	MB662
Between Ancient Bagan and Royal Mandalay (2N)	Upstream	30/04/13	02/05/13	PK 07	BM1292

(*) If deemed necessary, Company reserves the right at its sole option and discretion, without any liability for damages or refund to substitute the scheduled vessel with another equivalent of its fleet.



MANAGED BY AYRAVATA CRUISE COMPANY

SALES TERMS AND CONDITIONS

RATES

- The Cruises Retail Rates are per person in US\$ based on two pax sharing a cabin.
- The Cruises Retail Rates are based on known costs (including Fuel Costs and Governmental Taxes/fees) as for 01 April 2010.
- The Cruises Retail Rates are guaranteed within the validity of the same but the company reserves the right to apply a surcharge (up to 30 days before the departure) in the sole case of an increase in Governmental Tax/Fees and/or Fuel Costs. Such surcharge is applicable to any bookings where the full balance has not been paid yet.

LAND TOUR RATES

All rates in US Dollar at current rates of exchange and are subject to change without prior notice.

CHILDREN POLICY

RV PAUKAN (2007)

- Up to 2 years: Complimentary in the parent/guardian's cabin.
- 3-12 Years: if the child stays in the cabin with one of the parents/guardians 50% of the twin-sharing rate. Upon request we can provide an Extra Bed.
- Suite rooms: Complimentary up to 12 years old (cot or extra bed is provided).

RV PAUKAN (1947) - FORMERLY PANDAW (1947)

- Up to 2 years: Complimentary in the parent/guardian's cabin.
- 3-12 Years: if the child stays in the bed with one of the parents/guardians 50% of the twin-sharing rate.



MANAGED BY AYRAVATA CRUISE COMPANY

RESERVATION POLICIES & PAYMENT TERMS

ENQUIRES / RESERVATION

E-mail: info@ayravatacruises.com

Fax: +95 1 382734

BOOKING PROCEDURES

- Option Terms: we can hold your request of cabins for up to 7 days.
- Reconfirmation: In order to reconfirm your reservation, we kindly require your written confirmation (the signed copy) of the "Option" Pro forma invoice not later than 8 days of the issuing date with the acceptance of the "Booking Terms and Conditions" (by fax or e-mail) stating guest names, Passport-Visa Number, DOB, Arrival Date in Myanmar, Arrival Flight.
- Invoice: After receiving your reconfirmation, we will send you a "Confirmation" Final Invoice. Payment can be done either by Bank Transfer or Credit Card (subject to bank approval).
- Deposit: To secure the reservation, 20% deposit (not refundable) is required upon reconfirmation. If the booking is made less than 61 days prior the departure we require to settle the full amount of the holiday price.

CANCELLATION TERMS

The cancellation notice must be received in writing either by e-mail or fax. It will be effective on the date of receipt. Cancellation charges, per person, are based upon the date of cancellation:

- Up to 91 days prior to departure: Deposit will be forfeited.
- From 90-61: 30% of Holiday Price
- From 60-31: 50% of Holiday Price
- From 30 days to "no show" 100% of Holiday Price

DEPARTURE DATE CHANGE / REVISION

- Up to 91 days prior to departure all type of changes are subject to US\$30 charge per change
- From 90 days prior to departure any departure date changes is subject to a Cancellation Fee as stated above.

PAYMENT TERMS

- In order to secure your reservation, 20% deposit (not refundable) is required upon booking confirmation
- Final balance: within 60 days prior the departure date.
- Payment can be done either by Bank Transfer or Credit Card (subject to bank approval)



MANAGED BY AYRAVATA CRUISE COMPANY

ADDITIONAL TERMS

MINIMUM OCCUPANCY

For all departures should the occupancy be less than 10 passengers for **Short Discovery Cruise** and 12 passengers for **Exploration and Discovery Cruises** the Company reserves the right to cancel the cruise up to 60 days prior the departure date. A confirmation notice in writing will be released by the company to all booked clients and/or their agents within the deadline. In case of cancellation an alternative cruise will be offered and if not acceptable all down payments will be immediately refunded.

OPERATING VESSEL

Ayravata Cruises reserves the right at its sole option and discretion, without any liability for damages or refund, of any kind to arrange for substantially equivalent transportation by another vessel, whether belonging to the Company or not.

LAND TOURS

LIABILITY

Land Tours are operated by third parties. Ayravata Cruises acts as coordinator, supervisor and agent only and is therefore not responsible for any loss, injury or damage sustained by the tourists, including those occurring outside the touring programs.

PASSENGER INFORMATION

Information regarding “life on board” and safety procedures can be found in the links below. A PDF version in 4 languages is available upon request. We strongly recommend all agents and passengers to read it before travelling.

RV PAUKAN 2007

<http://www.ayravatacruises.com/passenger-info-pk.htm>

RV PAUKAN 1947 (FORMERLY PANDAW 1947)

<http://www.ayravatacruises.com/passenger-info-pd.htm>



MANAGED BY AYRAVATA CRUISE COMPANY

CHARTER SERVICE

Our vessels can be chartered for Large Groups, Series, Seasonal charter, MICE and special interest groups.

ENQUIRES

For a quotation and availability please contact our sales department:

info@ayravatacruises.com

TERMS & CONDITIONS

EMBARKATION

Not before 10.00 hrs on first day

DISEMBARKATION

Not after 10.00 hrs on last day

REPOSITIONING

There might be a surcharge to reposition the vessel to either Mandalay (our main river station hub) or Bagan.

FEE INCLUDES

All meals, coffee & tea, mineral water, afternoon snacks, accommodation; fuel, port dues, pilotage; captain and crew; our expertise in planning and if requested escorting excursions ashore during the cruise

FEE EXCLUDES

Ground handling, meaning: guide services, entrance fees, shore transport costs, pre/post cruise arrangements and transfers; soft drinks, wines, spirits, liqueurs.

PAYMENTS SCHEDULE

- 30% of total upon reservation

- 120 day prior to departure: 20% of total

(If reservation is made less than 120 days prior to departure the not-refundable deposit will be 50% of total)

- 60 days prior to departure: Balance

CANCELLATION FEE

30% of the total if made more than 121 days before departure

50% of the total cost between 120 and 61 days before departure

100 % of the total cost between 60 days and the day of departure

TERMS & CONDITIONS OF CARRIAGE

As published in the Passenger Ticket Contract" document.



MANAGED BY AYRAVATA CRUISE COMPANY

PASSENGER TICKET CONTRACT

IMPORTANT TERMS AND CONDITIONS OF THIS PASSENGER TICKET CONTRACT (the “Contract”) ARE CONTAINED BELOW.

PASSENGER HEREBY ACCEPTS AND AGREES TO THE TERMS AND CONDITIONS CONTAINED IN THIS CONTRACT.

IMPORTANT NOTICE TO PASSENGERS: THIS CONTRACT IS A LEGALLY BINDING CONTRACT BETWEEN PASSENGER AND COMPANY. THIS CONTRACT CONTAINS CERTAIN LIMITATIONS OF LIABILITY, INCLUDING LIMITATIONS RESPECTING INJURY TO OR DEATH OF PASSENGER AND DAMAGE CLAIMS RELATING TO BAGGAGE. CERTAIN OTHER PERSONS AND ENTITIES, AS WELL AS THE VESSEL ITSELF, ARE ALSO GRANTED RIGHTS UNDER THIS TICKET CONTRACT. PLEASE READ THESE TERMS AND CONDITIONS CAREFULLY. BY ACCEPTING THIS CONTRACT AND BOARDING THE VESSEL, PASSENGER AGREES TO ACCEPT AND TO BE BOUND BY ALL OF THE TERMS AND CONDITIONS HEREOF, INCLUDING SPECIFICALLY THOSE REGARDING PASSENGER’S RIGHT TO SUE, GOVERNING LAW, FORUM AND JURISDICTION.

NOTICE: SECTIONS 4, 5, 6, 7, 8, 9, 10 and 12 CONTAIN IMPORTANT LIMITATIONS ON PASSENGER’S RIGHT TO ASSERT CLAIMS AGAINST COMPANY AND CERTAIN THIRD PARTIES.

TERMS AND CONDITIONS OF THIS CONTRACT

THE FOLLOWING TERMS AND CONDITIONS ARE THE ENTIRE AGREEMENT BETWEEN COMPANY AND PASSENGER. THIS IS A BINDING CONTRACT. Company enters into contracts of carriage, issues all Contracts, and accepts and carries Passenger and Baggage only on and subject to these Terms and Conditions. This Contract is an agreement between Passenger and Company, and their respective agents, servants and employees. Specifically, the limitations of liability contained herein are applicable to claims against all parties listed in the definition of “Company”.

1. DEFINITIONS:

“**Baggage**” means all such Passenger baggage allowed on the Vessel pursuant to the terms of this Contract which is placed in Passenger’s cabin, or which has been stored in the Vessel’s baggage room, holds or safe against receipt therefore at the request of Passenger.

“**Company**” means Ayravata Cruises (Interconnection Co. Ltd), and its and their owners, operators and charterers, all affiliated companies including but not limited to, parent and or subsidiary entities and sales representatives and all employees of such individuals and companies.

“**Conventions**” means the Athens Convention Relating to the Carriage of Passengers and Their Luggage by Sea, 1974, the International Convention on Limitation of Liability For Maritime Claims, 1976, and, where applicable, the Strasbourg Convention on the Limitation of Liability in Inland Navigation, 1988.

“**Passenger**” means every person named on the face of this Contract and/or traveling under this Contract or occupying the cabin designated on this Contract, including their heirs, successors in interest and personal representatives.

“**Contract**” means this entire Passenger Ticket Contract document including all its terms and conditions.

“**Vessel**” means any ship chartered or operated or provided by Company, whether owned, chartered, or operated by Company or by third parties; on which Passenger may be traveling, or any ship substituted therefore, and its tenders or any other similar means of conveyance.



MANAGED BY AYRAVATA CRUISE COMPANY

2. NON-TRANSFERABILITY/BINDING EFFECT: This Contract is valid only for Passenger or Passengers named herein for the date and Vessel indicated. It may not be sold or transferred. Passenger represents and warrants that s/he is duly authorized by and on behalf of all Passengers (including minor children) named on this Contract to agree to and to bind all such Passengers to such terms and conditions.

3. EMBARKATION: Passenger is required to be on board the Vessel at least 30 minutes before the initial scheduled departure time and any departure time subsequently announced during the cruise. At the time of embarkation Passenger is responsible for having received all medical inoculations necessary for the voyage. Company shall have no liability to Passenger whatsoever if Passenger is not on board prior to the Vessel's departure.

4. BAGGAGE, VALUABLES AND OTHER POSSESSIONS: All Baggage must be securely packed and distinctly labeled with Passenger's full name, the name of the Vessel, and the cabin number of Passenger and the sailing date of the Vessel. Under no circumstances, may dangerous articles such as firearms, explosives, oxygen or combustible substances, alcohol, drugs, illegal substances, or dangerous goods be taken aboard the Vessel. Any such item shall be surrendered to the Captain of the Vessel at embarkation, and may be disposed of in the sole discretion of the Captain.

Hand or unlocked luggage, breakables and valuables, including but not limited to jewelry, money, precious stones, securities, financial instruments and/or tickets, must be hand-carried by Passengers on and off the Vessel. Company shall not be responsible for loss or damage to such items.

5. LIABILITY LIMITATIONS FOR LOSS OF AND/OR DAMAGE TO PROPERTY: The total value of the Baggage, valuables and other personal belongings of a Passenger aboard the Vessel who does not deposit valuables for safekeeping, as described in this Contract, shall be deemed not to exceed the amount of US\$200 per Passenger and Company's liability, if any, for loss of or damage to such belongings is limited to a maximum of US\$200 per Passenger. Company provides safekeeping for valuables aboard the Vessel and encourages Passengers to deposit any jewelry or other valuables brought aboard the Vessel with the designated officer who will issue a receipt for such valuables. Company shall not be liable for any loss of or damage to money, jewelry, precious stones, securities, financial instruments, tickets or other valuables unless they have been delivered to the Ship Manager and a receipt issued. The value of articles delivered for safekeeping shall be deemed not to exceed US\$200 unless Company agrees in writing to a higher value for the articles at the time of delivery to the Ship Manager.

Unless specifically provided elsewhere in this Contract, Company shall have no liability for loss or damage to Baggage or personal effects. Personal belongings lost while unattended in public lounges or other public areas, whether on board the Vessel or elsewhere, are not reimbursable. Losses due to ordinary wear and tear, perils of the river, and other acts-of-God are not reimbursable. Settlements of reimbursable claims for lost belongings will be made on the basis of actual cash value (replacement cost less depreciation). Settlements of reimbursable claims for damaged items will be on the basis of cost of repair or actual cash value, whichever is less. No amount shall be paid in settlement of any claim without proof of the actual cash value or repair cost as appropriate arising from the loss or damage. Such proof must be sent to Company. Company liability must be proven before any settlement will be paid.

6. ITINERARY / RIGHT TO CHANGE / DETENTION: Company will make every reasonable effort to undertake the advertised and any other agreed and offered sailings but no sailings are guaranteed and sailings may be altered, delayed, amended, or cancelled subject to circumstances. If the performance of the proposed voyage is hindered or prevented (or in the opinion of Company is likely to be hindered or prevented) by high or low water levels, docking difficulties, weather condition, breakdown of the Vessel, congestion, lock operational malfunction, or any other cause whatsoever or if Company considers that for any reason whatsoever, proceeding to, attempting to enter, or entering or remaining at the place of disembarkation.



MANAGED BY AYRAVATA CRUISE COMPANY

kation may expose the Vessel to risk of loss or damage or to be likely to delay her, Passenger and his property may be landed at any place which Company or the Captain of the Vessel in his or her discretion may reasonably decide upon, at which place the responsibility of Company shall cease and this contract shall be deemed to have been fully performed, or if Passenger has not embarked, Company may cancel the proposed voyage and shall refund Passenger money or fares paid in advance. Company reserves the right at its sole option and discretion, without any liability for damages or refund, of any kind to deviate from the Vessel's advertised or ordinary itinerary or route, to delay, advance or lengthen any sailing, to omit or change ports of call, to arrange for substantially equivalent transportation by another vessel and/or by other means of transportation, including without limitation by coach or other land transportation alternatives, whether belonging to Company or not, and to cause Passenger to disembark from the Vessel temporarily or permanently. Company may for any reason whatsoever cancel any sailing or terminate the Contract at any time before departure of the Vessel, and in such event, Company's only liability will be to refund to Passenger the amount it has received for the Contract. For purposes of assisting other vessels or protecting life or property, the Captain of the Vessel has the right, at his or her sole discretion, to deviate from the Vessel's advertised or ordinary itinerary or route, to delay, advance or cancel any sailing, to omit or change any ports of call, to tow or to be towed, to transfer Passenger and Passenger's baggage to any other vessel and or other means of transportation whether belonging to Company or not, cause Passenger to disembark the Vessel temporarily or permanently, and Passenger shall have no claims against Company in such circumstances.

7. HEALTH AND SECURITY/INDEMNIFICATION BY PASSENGER: Access to the ship at certain river stations can be difficult, with steep and sometimes slippery river banks. Passenger represents and warrants that Passenger is physically and otherwise fit to travel; that s/he will at all times comply with Vessel's rules and regulations and orders and directions of the Vessel's officers and staff; that his/her conduct will not impair the safety of the Vessel or inconvenience other passengers.

Company and the Captain of the Vessel, without liability, at any time, may refuse to transport or may land any Passenger at any port or place, or transfer Passenger to other means of transportation, because of health or physical condition, mental disorder, failure to abide by Vessel regulations or other causes rendering Passenger unfit to travel on the Vessel.

If Passenger is refused passage or leaves the Vessel prior to the end of the cruise for any of the reasons described in this section or for other reasons including, but not limited to, personal, medical, or business reasons, Company will not be required to refund any portion of the Contract price, or be responsible for any of Passenger's cost.

Passenger hereby consents to a reasonable search being made of Passenger's person, baggage or other property, and to the removal and confiscation or destruction of any object which may, in the opinion of Company, impair the safety of the Vessel or inconvenience other Passengers.

Passenger shall indemnify Company for all penalties, fines, charges, losses or expenses incurred or imposed upon Company or the Vessel by virtue of any act or violation of law by Passenger.

8. PASSENGER RESTRICTIONS: Company does not discriminate against persons on the basis of disability. Company is unable to accommodate women past their sixth month of pregnancy and children less than six months of age. Company may limit the number of Passengers less than three years of age aboard the Vessel. Any child under the age of eighteen must be accompanied by an adult over the age of twenty-one. If the accompanying adult is not a parent, a "Parental Consent Guardianship Form" must be signed by a parent or legal guardian of the child and received by Company prior sailing. Passenger is required to advise Company in writing, at or prior to the time a cruise is booked, of any physical, emotional or mental condition which may require professional attention during the cruise. The Vessel is not able to accommodate wheel-



MANAGED BY AYRAVATA CRUISE COMPANY

chairs. Passengers with mobility impairments must be accompanied by someone who is able to assist Passenger, on shore and on board the Vessel, and is responsible for providing Passenger all necessary aid and facilities. If any such condition arises after the cruise is booked, Passenger is required to advise Company in writing immediately. Company and all personnel aboard the Vessel shall have no liability to Passenger relating to such condition or its treatment.

9. INDEPENDENT CONTRACTOR/SHORE TOURS/LIMIT OF LIABILITY: Company makes no representations concerning and has no responsibility for tours, including, without limitation, shore excursions, hotels, restaurants and transportation, whether by vessel, air, rail, land or other means, not owned or operated by Company. Company shall have no obligation or liability of any kind to Passenger for acts or omissions in connection with or arising out of arrangements with independent contractors. Arrangements with independent contractors include, but are not limited to the following: (1) airline and surface transportation; (2) services or products available for Passenger's convenience aboard the Vessel; (2) services, products or transportation provided other than aboard the Vessel furnished by others, including without limitation, sight-seeing tours, pre-cruise and post-cruise tours, excursions, shore trips and tender service, whether arranged or organized by tour operators, travel agents or Company. The Passenger's agreements with independent contractors are not covered by this Contract and shall be subject to the terms and conditions of Passenger's agreements with such carriers and independent contractors, whether or not any products sold, services tendered or transportation provided to Passenger is arranged directly or through Company. Passenger agrees that all rights, exemptions from liability, defenses and immunities of whatsoever nature referred to in this Contract applicable to Company or the Vessel, shall in all respects inure also for the benefit of any servant, agent or independent contractor of Company acting in the course of or in connection with their employment so that in no circumstances shall any such servant, agent or independent contractor, as the result of so acting, be under any liability to any such Passenger different from that of Company.

10. NO LIABILITY FOR MEDICAL TREATMENT: No staff doctors or nurses are employed by Company on the Vessel. If Passenger requires medical attention during the trip, medical services will be provided at local facilities. Passenger shall be responsible for all costs and expenses of medical services, treatment and medications. Company shall have no liability whatsoever for any costs incurred in connection with medical services, or for the quality of care Passenger receives. Passenger consents to treatment by medical professionals designated by Company, if Passenger is unable to request or authorize medical treatment and, in the opinion of the Ship Manager, medical attention is necessary, solely at the expense of Passenger and without liability to Company.

11. PAYMENT BY PASSENGER AND EXTRA EXPENSES: Any and all payments by Passenger to Company shall be made in currency of the United States of America or such other currency acceptable to Company. All charges for services and products provided on board the Vessel must be settled in cash or charged (via credit card acceptable to Company) before Passenger's final disembarkation from the Vessel. Any other expenses incurred by Passenger or by Company on behalf of Passenger shall be payable by Passenger on demand.

12. LIABILITY LIMITATION FOR LOSS OF LIFE OR BODILY INJURY: If Passenger is injured, becomes ill, or dies, or Passenger's property is lost or damaged, or Passenger and/or his/her property is delayed, Company will not be liable to Passenger for any damages unless the occurrence was due to the negligence of Company or willful fault. Company disclaims liability to Passenger under any circumstances for infliction of emotional distress, mental suffering or psychological injury which was not: (i) the result of physical injury to Passenger caused by the negligence or fault of a crewmember or the manager, agent, master, owner or operator of the Vessel; (ii) the result of Passenger having been at actual risk of physical injury, and such risk was caused by the negligence or fault of a crewmember or the manager, agent, master, owner or operator of the Vessel; or (iii) intentionally inflicted by a crewmember or the manager, agent, master, owner or operator of the



MANAGED BY AYRAVATA CRUISE COMPANY

Vessel. In no event will Company be liable to Passenger for consequential, incidental, exemplary or punitive damages.

In addition to all of the restrictions and exemptions from liability provided in this Contract, the liability of Company for the death of or personal injury (including emotional distress or injury) to a Passenger shall in no event exceed the monetary limitations set forth in Article 7 of the Athens Convention. Nothing in this Contract is intended nor shall operate to limit or deprive Company of any such statutory limitation of or exoneration from liability, or of the benefits of any statute or law of any country which might be applicable providing for exoneration from or limitation of liability including but not limited to the 1976 Convention.

13. FORCE MAJEURE: Company shall not be liable in any way to Passenger for death, bodily injury, illness, damage, delay or other loss or detriment to person or property or for Company's failure to commence, perform and/or complete any duty owed to Passenger if such death, delay, bodily injury (including emotional distress or injury), illness, damage or other loss or detriment to person or property is caused by Act-of-God, war or war-like operations, terrorist activities, civil commotions, labor difficulties, whether or not Company is a party thereto, interference by authorities, requisitioning of the Vessel, political disturbance, inability to secure or failure of supplies, perils of the sea, collision, foundering of the Vessel, explosion, breakdown or failure of or damage to the Vessel or its hull, machineries or fittings, weather conditions, high or low water levels, lock malfunction, that may arise or be caused by, riots, insurrection and government restraint, fire, or any other cause whatsoever beyond the reasonable control of Company.

14. CHOICE OF LAW AND FORUM: This Contract applies to claim suits and litigation of any kind whether against Company in person or the Vessel. This Contract is issued at Yangon, Myanmar. Subject always to the Athens Convention Relating to the Carriage of Passengers and their Luggage by Sea, the International Convention on Limitation of Liability For Maritime Claims, 1976, the Strasbourg Agreement on Liability Limitations for Inland Shipping of 4 November 1998 and such other international agreements and conventions as may apply, all questions arising on this Contract shall be decided according to the laws of Myanmar, excluding the rules of conflicts of laws. Where the Athens Convention or any law applies mandatorily, venue shall lie before any court sanctioned by that Convention or law. In all other cases, Company and Passenger agree to submit to the jurisdiction of the Civil Court in Yangon, Myanmar in any dispute arising out of, or in connection with, this Contract or these Terms and Conditions, the ownership and/or operation of Vessel, to the exclusion of the jurisdiction of the courts of any other country. Passenger hereby waives any venue or other objection that may be available to any such action or proceeding being brought in said court.

15. INTERPRETATION: Should any provisions of this Contract be contrary to or invalid by virtue of the law of any jurisdiction or be so held by a court of competent jurisdiction, such provision shall be deemed to be severed from this Contract and of no force and effect and all remaining provisions herein shall continue to be in full force and effect. The heading of this Contract are for convenience of reference only and shall not define or limit any of the terms or provisions hereof. Whenever the context so requires, references to the male gender shall include references to the female, and references to the singular shall include the plural and vice-versa.

16. WARRANTIES/CONSEQUENTIAL DAMAGES EXCLUDED: ALL WARRANTIES INCLUDING WARRANTIES OF FITNESS FOR USE AND MERCHANTABILITY ARE EXPRESSLY EXCLUDED FROM THIS CONTRACT. COMPANY SHALL UNDER NO CIRCUMSTANCES BE LIABLE FOR ANY INDIRECT, SPECIAL OR CONSEQUENTIAL DAMAGES.

17. WRITTEN NOTICES: Except as otherwise expressly provided in this Contract, all written notice required by this Contract must be mailed to

AYRAVATA CRUISES

110, 38th Street, Kyauktada Township, Yangon, Myanmar



MANAGED BY AYRAVATA CRUISE COMPANY

18. ENTIRE AGREEMENT: THE PROVISIONS OF THIS TICKET/ CONTRACT REPRESENT THE ENTIRE AGREEMENT AND A BINDING CONTRACT BETWEEN PASSENGERS AND THE COMPANY. PASSENGER'S ACCEPTANCE OF THIS CONTRACT CONSTITUTES PASSENGER'S CONSENT TO THESE PROVISIONS. THESE PROVISIONS SUPERSEDE ANY ORAL OR WRITTEN REPRESENTATIONS. ANY CHANGE IN THESE PROVISIONS MUST BE IN WRITING AND SIGNED BY THE PRESIDENT OF COMPANY AND MAY REQUIRE A COMMENSURATE INCREASE IN FARE.



MANAGED BY AYRAVATA CRUISE COMPANY